

REGIONE LAZIO  
PROVINCIA DI VITERBO

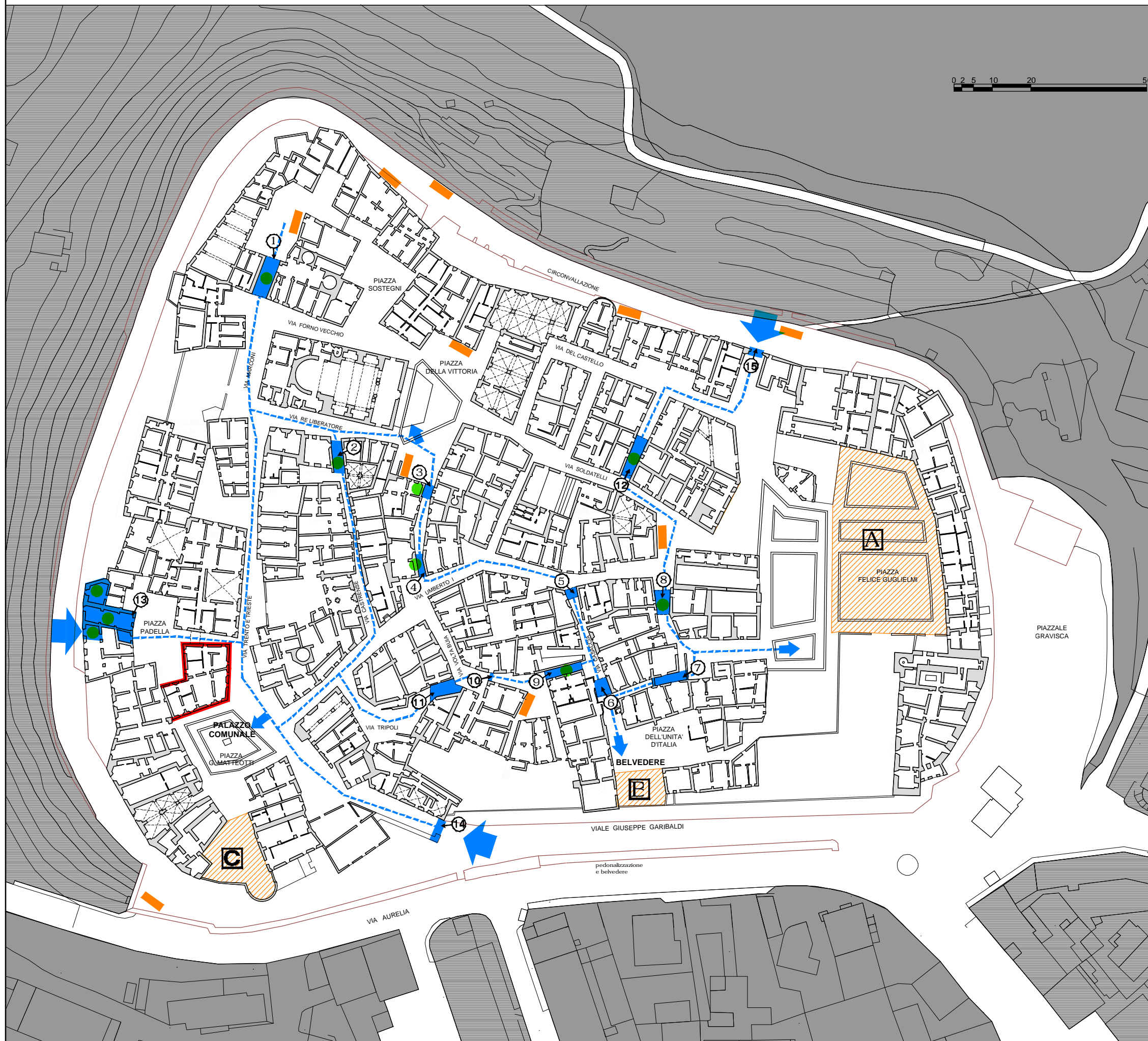


COMUNE DI MONTALTO DI  
CASTRO

OGGETTO: “Bando di concessione contributi ai Comuni, ad esclusione di Roma Capitale, per la realizzazione di opere e lavori pubblici finalizzati alla tutela e al recupero degli insediamenti urbani storici, ex L.R. n. 38/1999”

**PROGETTO DI RIQUALIFICAZIONE DEL CENTRO STORICO  
RELATIVO AD INTERVENTI FINALIZZATI ALLA:  
conservazione e valorizzazione del patrimonio edilizio storico,  
valorizzazione dell'identità culturale; miglioramento della qualità  
urbana e alla promozione territoriale; efficientamento energetico;**

TITOLO ELABORATO	Data
<b>AII. B - PROGETTO PROGETTO ESECUTIVO</b>	16 MARZO 2019
	ELABORATO <b>AII. B</b>
Committente: <b>COMUNE DI MONTALTO DI CASTRO</b>	
Coordinamento: <b>Arch. Renata Cedrone</b>	
Tecnico incaricato: <b>Arch. Vittorio Minio Paluello</b> 	
Collaboratori: <b>Arch. Paola Taglioni</b>	



LEGENDA:

INT. 1 - FACCIATE PALAZZO COMUNALE

— Facciate oggetto dell'intervento

INT. 2 - VALORIZZAZIONE DEL SISTEMA DEGLI ACCESSI E PASSAGGI COPERTI

➔ Accessi al centro storico

■ Individuazione Arco/ porta/ passetto

① Numero identificativo

--- Il Percorso tematico

INT. 3 - VALORIZZAZIONE SPAZI PUBBLICI MEDIANTE NUOVI ARREDI URBANI

▨ SPAZI CON CARATTERI DISTINTIVI

**A** PIAZZA FELICE GUGLIELMI  
progetto di valorizzazione della piazza e recupero della sua identità quale corte del castello - pedonalizzazione - arredi urbani

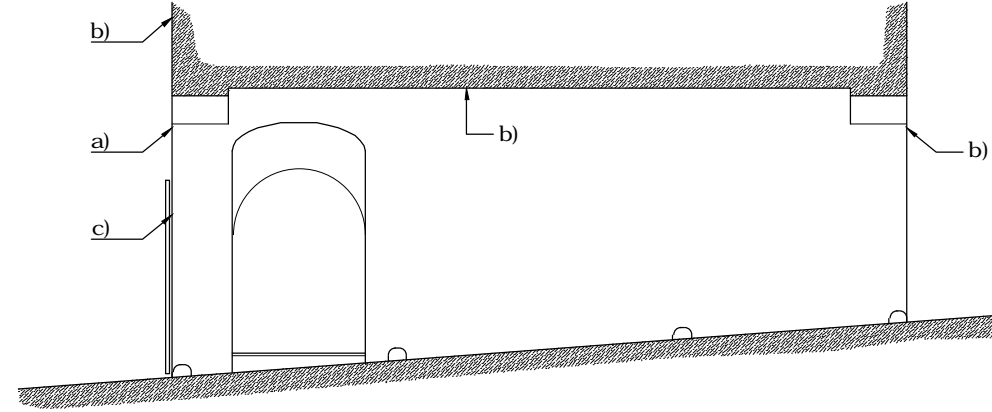
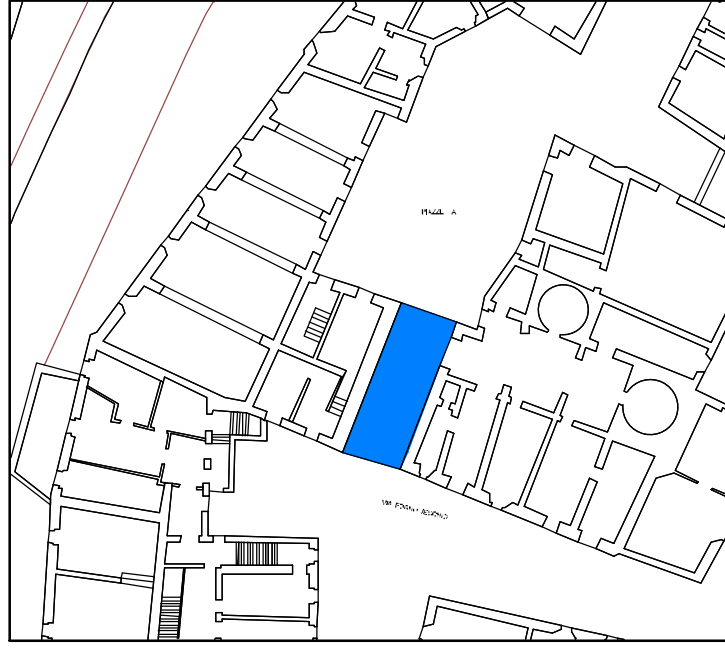
**B** BELVEDERE P.ZZA UNITA' D'ITALIA  
progetto di riqualificazione del belvedere - pedonalizzazione - arredi urbani

**C** TORRE BELVEDERE  
progetto di riqualificazione del belvedere - già pedonale - arredi urbani

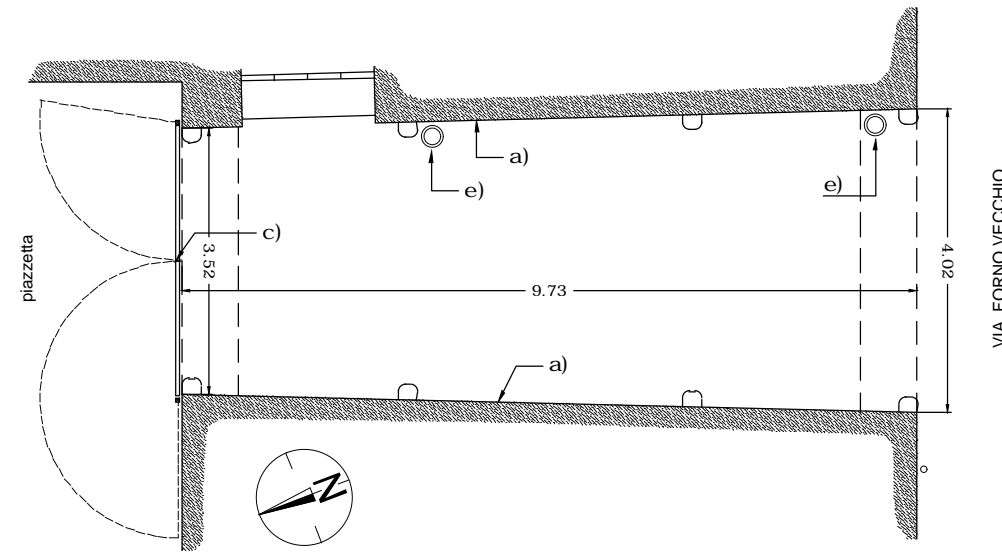
■ panchine e arredi diffusi in punti dei tessuti e nei punti panoramici della circoscrizione

INT. 4 - EFFICIENTAMENTO ILLUMINAZIONE PUBBLICA

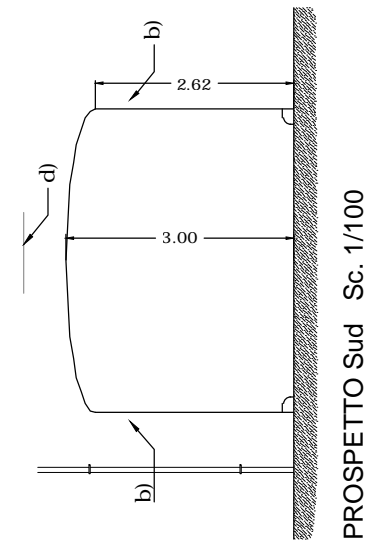
● SOSTITUZIONE CORPI ILLUMINANTI CON NUOVI APPARECCHI A LED



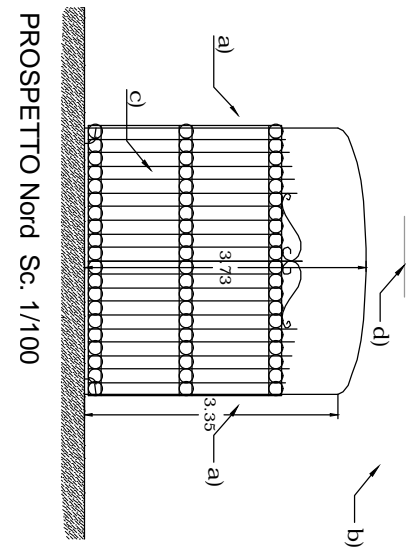
SEZIONE LONGITUDINALE Est Sc. 1/100



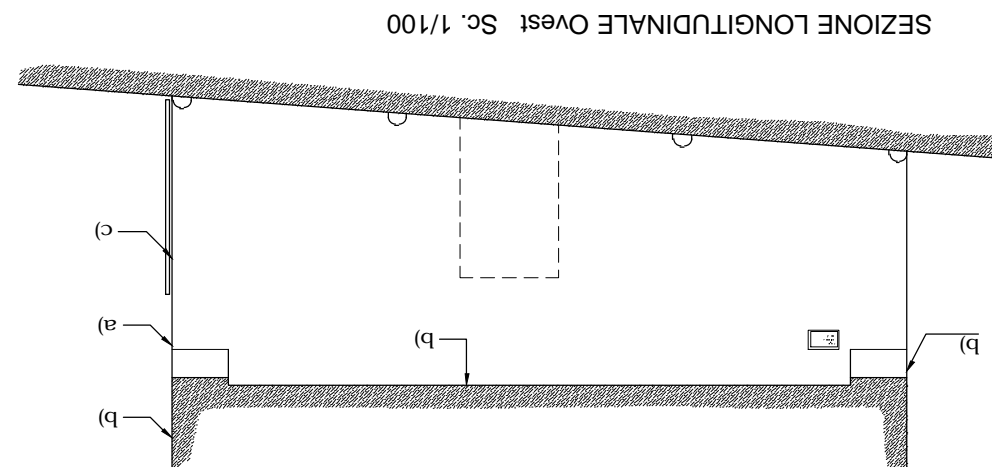
PIANTA Sc. 1/100



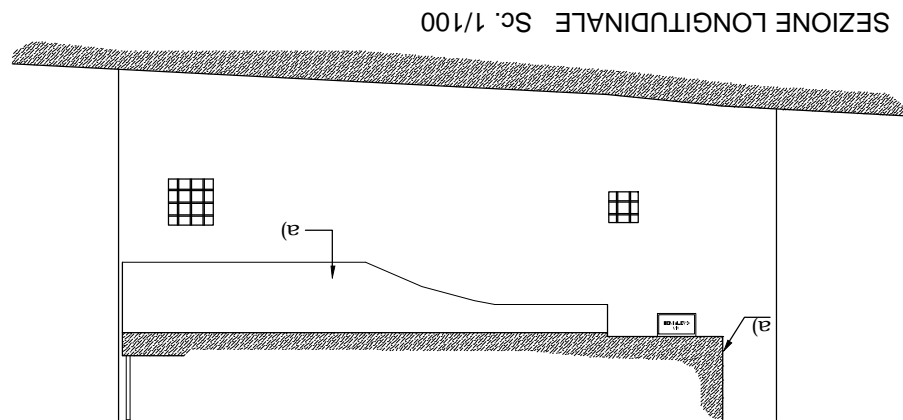
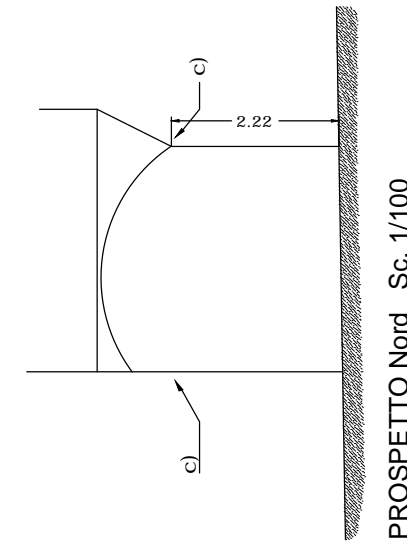
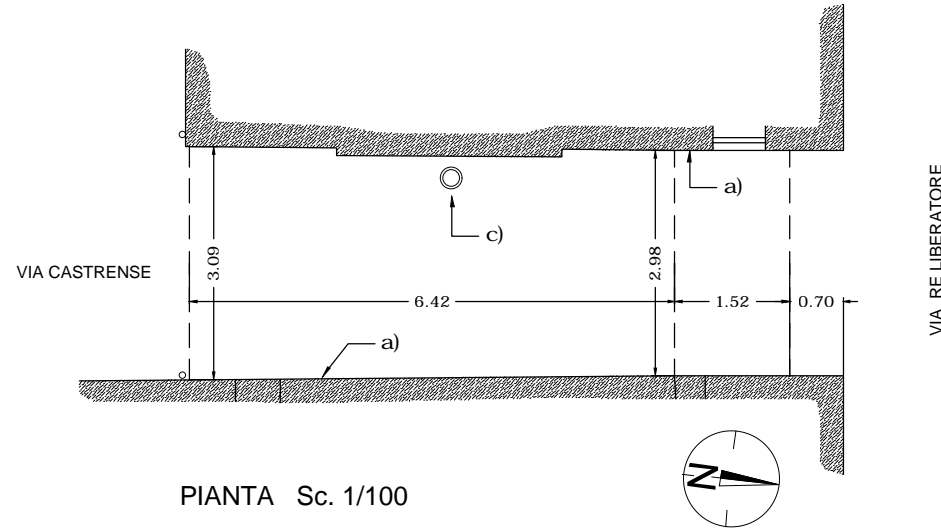
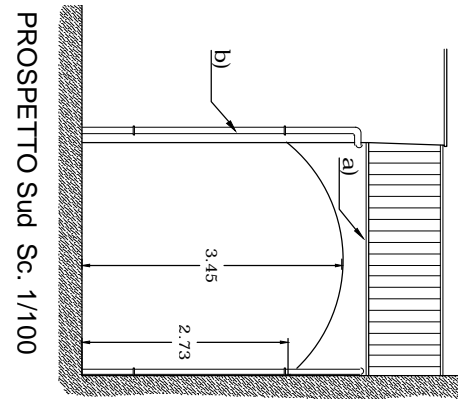
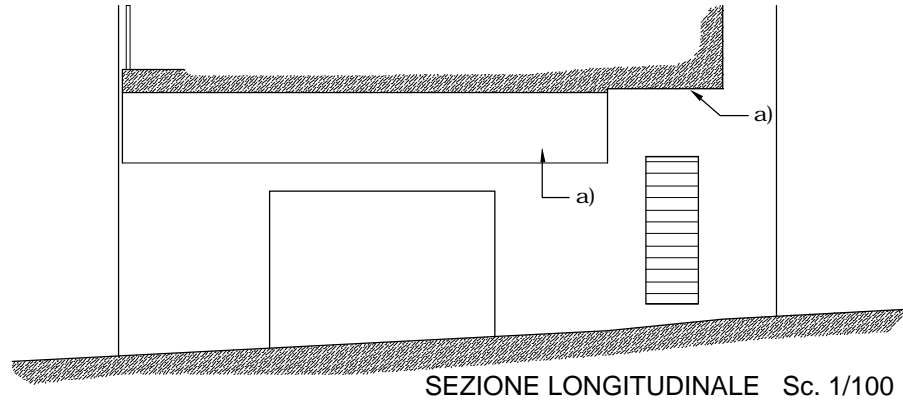
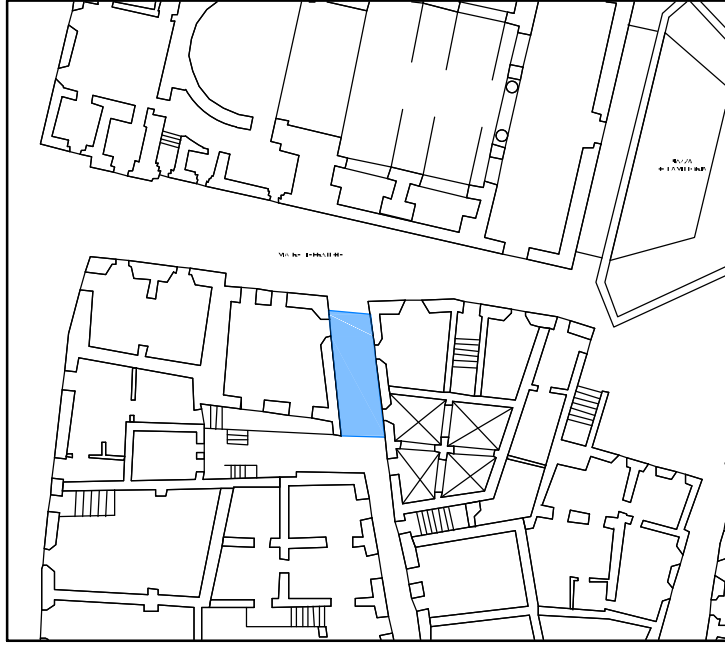
PROSPETTO Sud Sc. 1/100

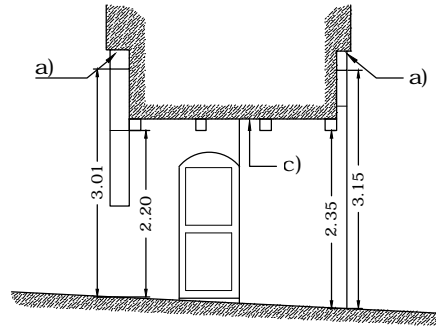
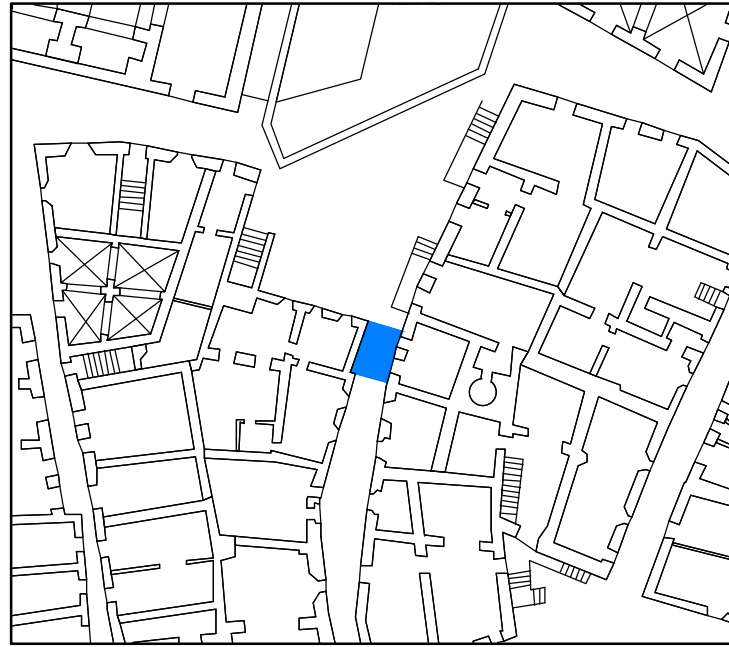


PROSPETTO Nord Sc. 1/100

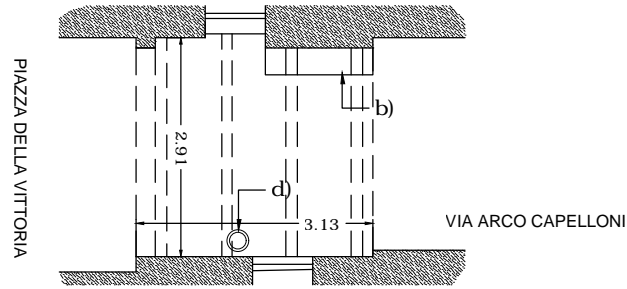


SEZIONE LONGITUDINALE Ovest Sc. 1/100

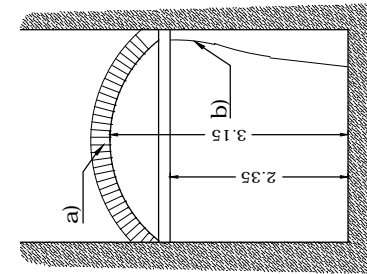




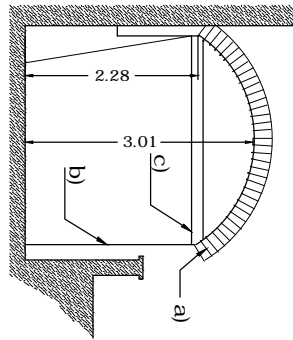
SEZIONE LONGITUDINALE Est Sc. 1/100



PIANTA Sc. 1/100

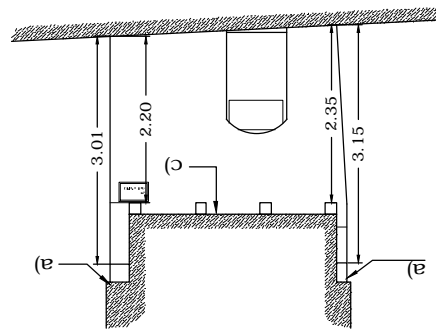


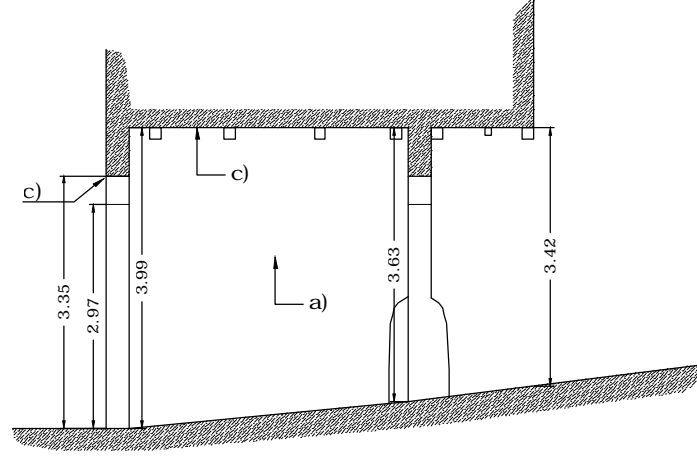
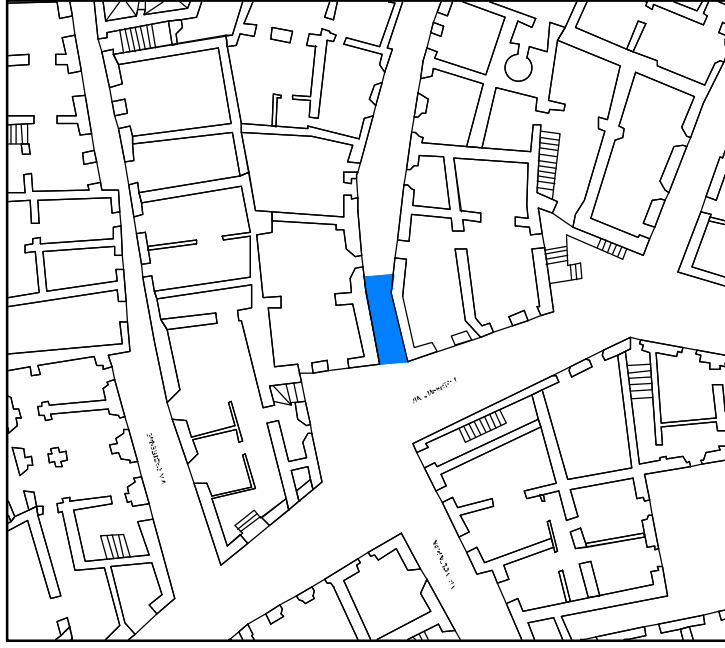
PROSPETTO Sud Sc. 1/100



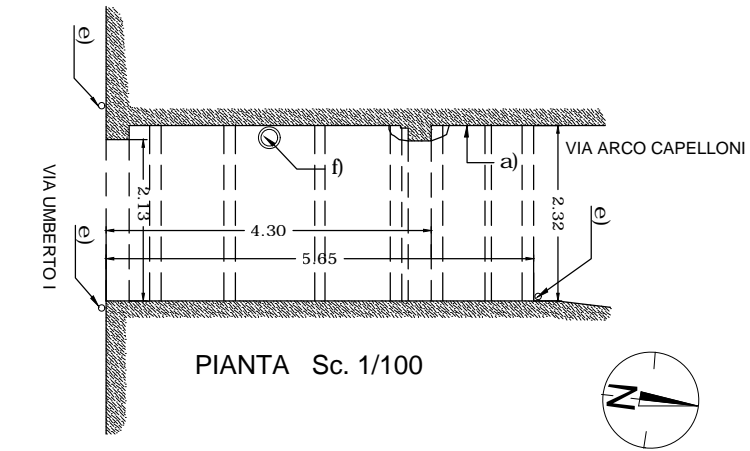
PROSPETTO Nord Sc. 1/100

SEZIONE LONGITUDINALE Ovest Sc. 1/100

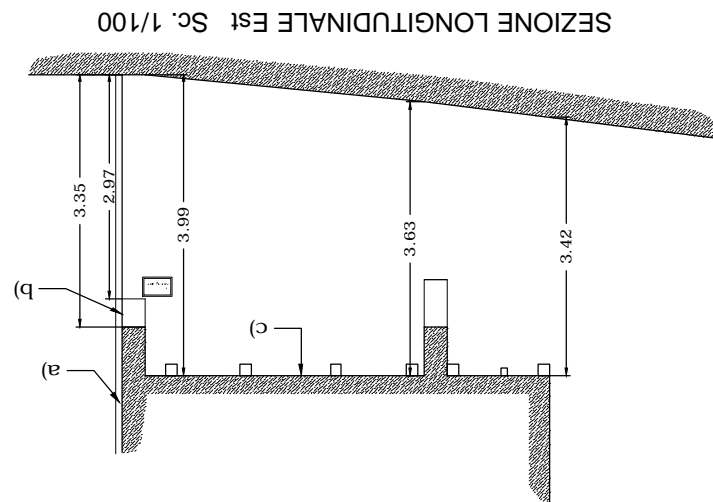




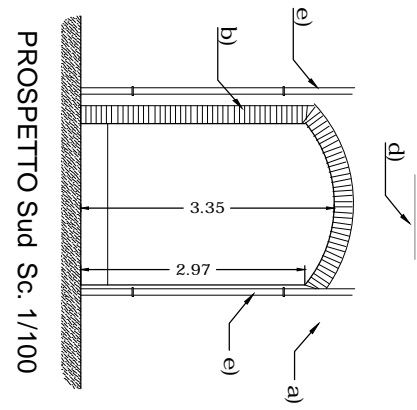
SEZIONE LONGITUDINALE Ovest Sc. 1/100



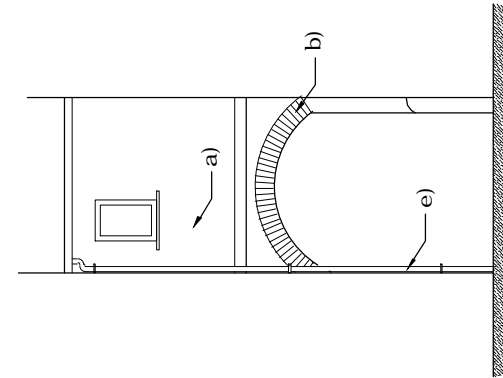
PIANTA Sc. 1/100



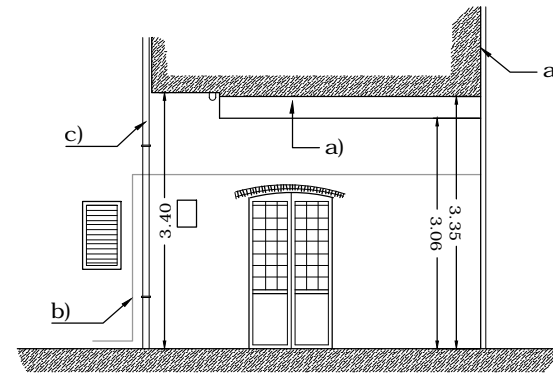
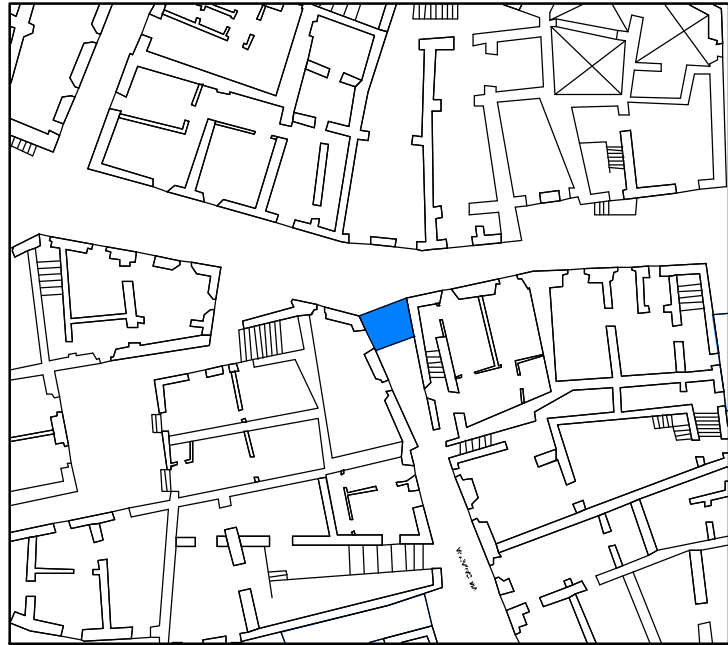
SEZIONE LONGITUDINALE Est Sc. 1/100



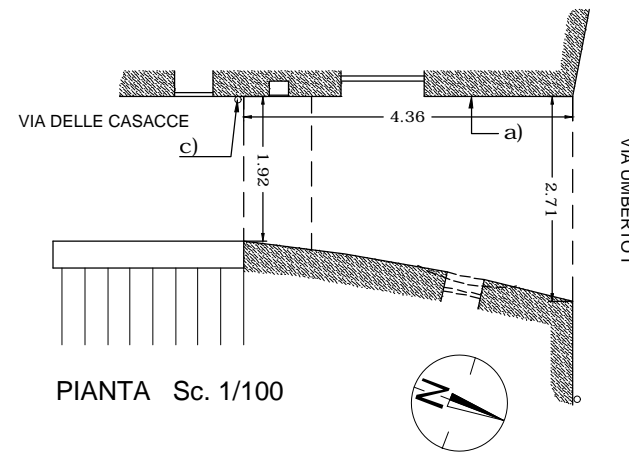
PROSPETTO Sud Sc. 1/100



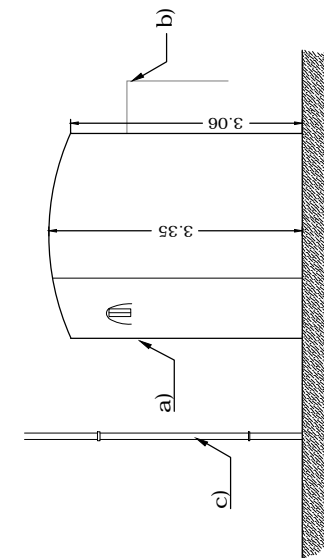
PROSPETTO Nord Sc. 1/100



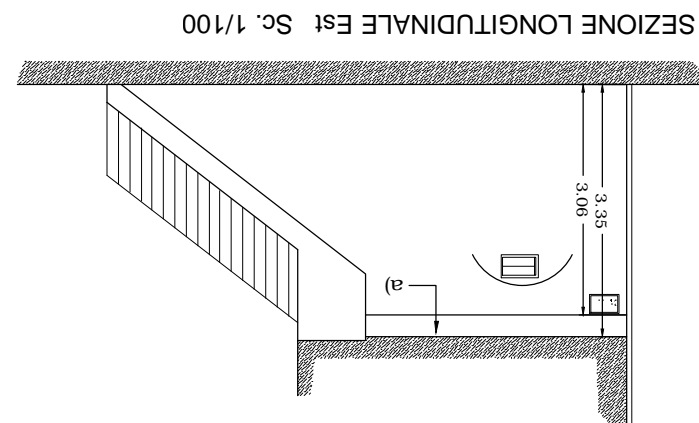
SEZIONE LONGITUDINALE Ovest Sc. 1/100



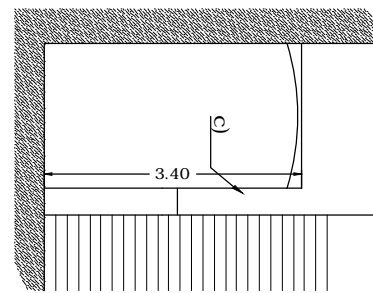
PIANTA Sc. 1/100



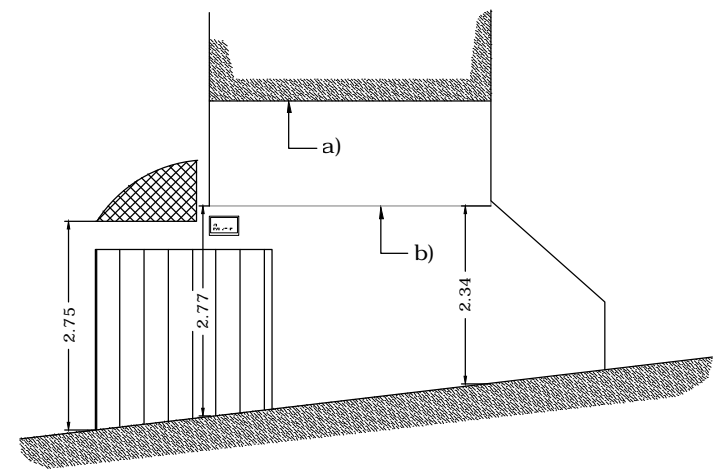
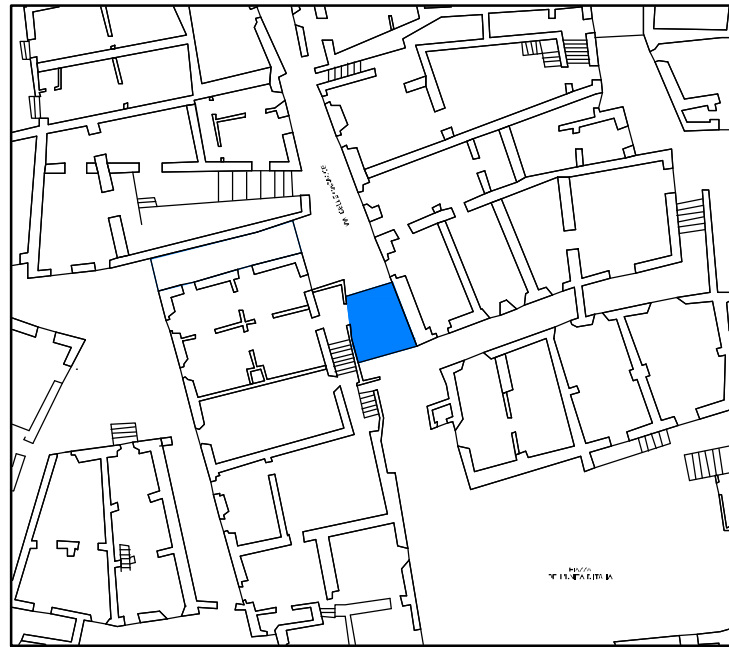
PROSPETTO Nord Sc. 1/100



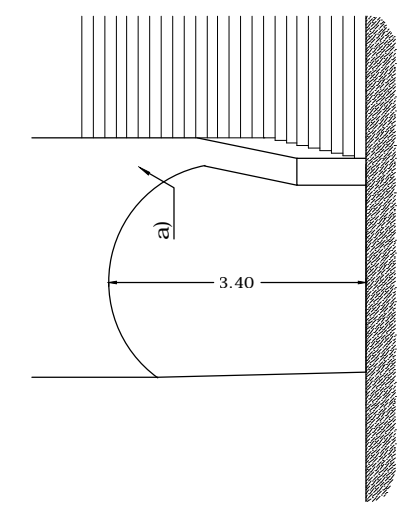
SEZIONE LONGITUDINALE Est Sc. 1/100



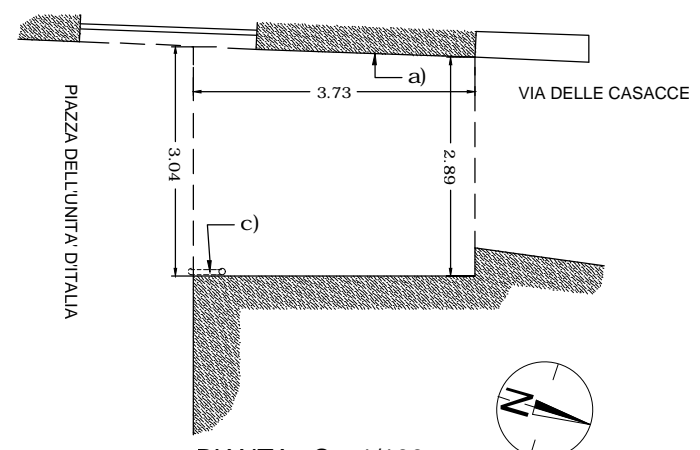
PROSPETTO Sud Sc. 1/100



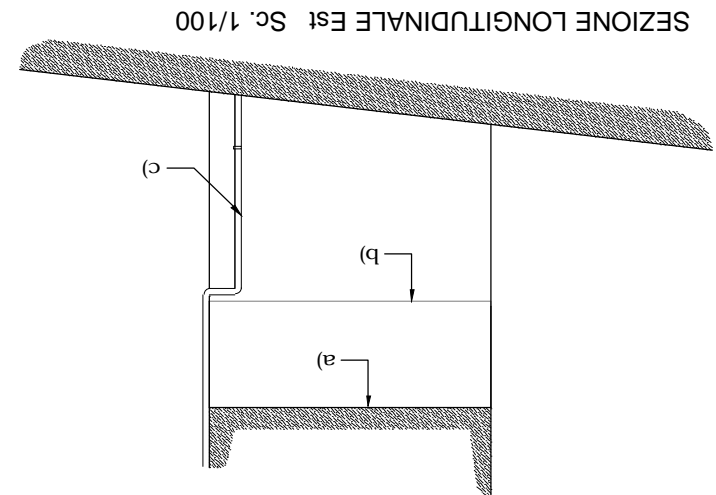
SEZIONE LONGITUDINALE Ovest Sc. 1/100



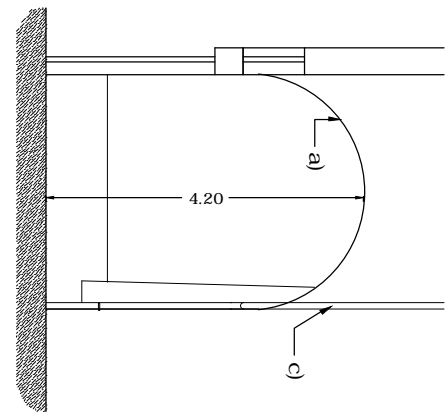
PROSPETTO Nord Sc. 1/100



PIANTA Sc. 1/100

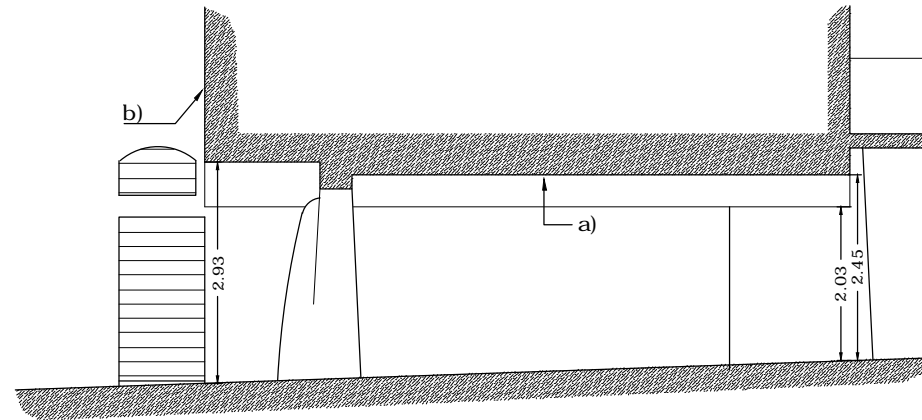
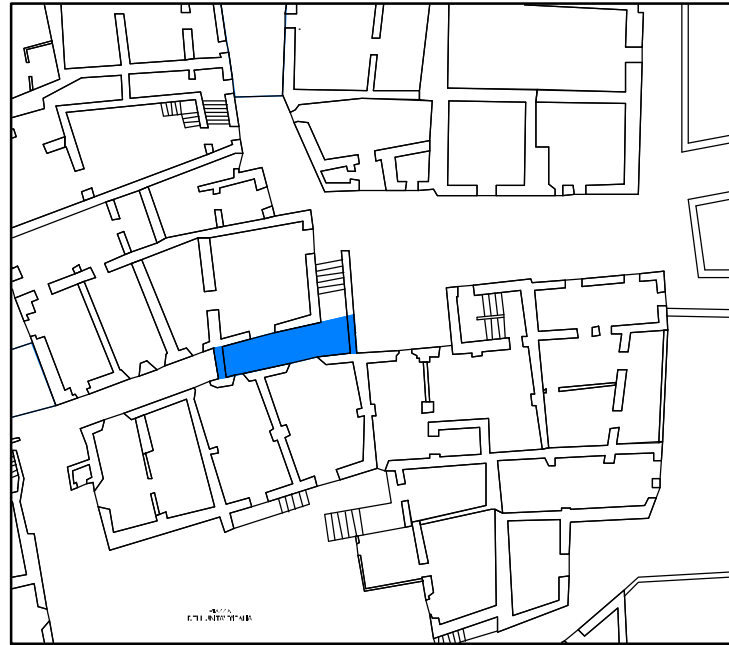


SEZIONE LONGITUDINALE Est Sc. 1/100

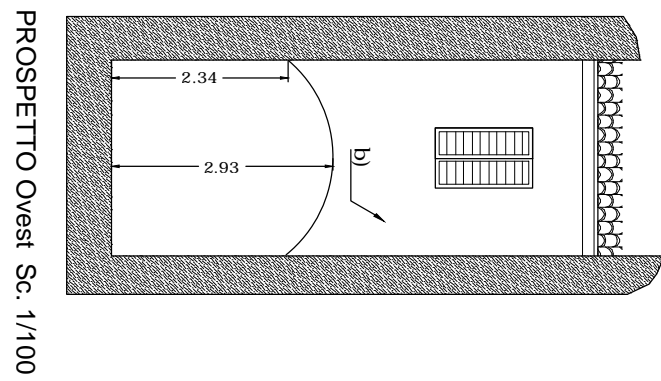


PROSPETTO Sud Sc. 1/100

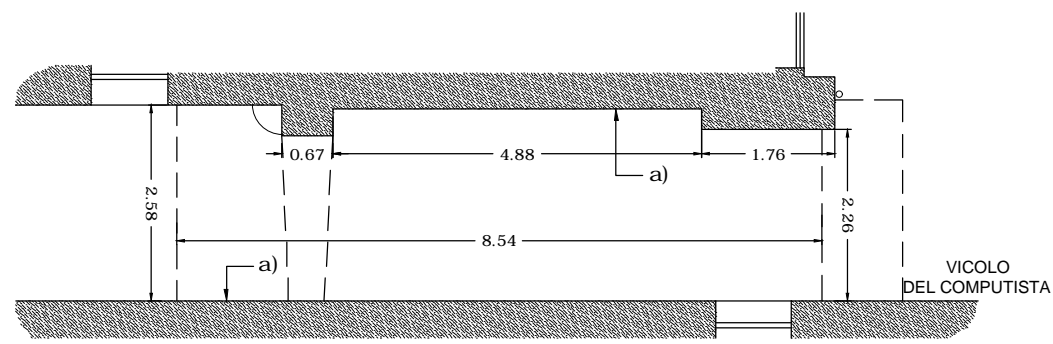




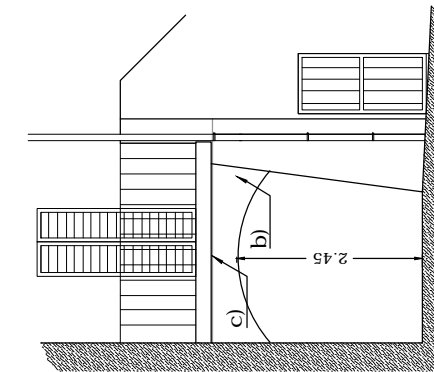
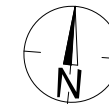
SEZIONE LONGITUDINALE Nord Sc. 1/100



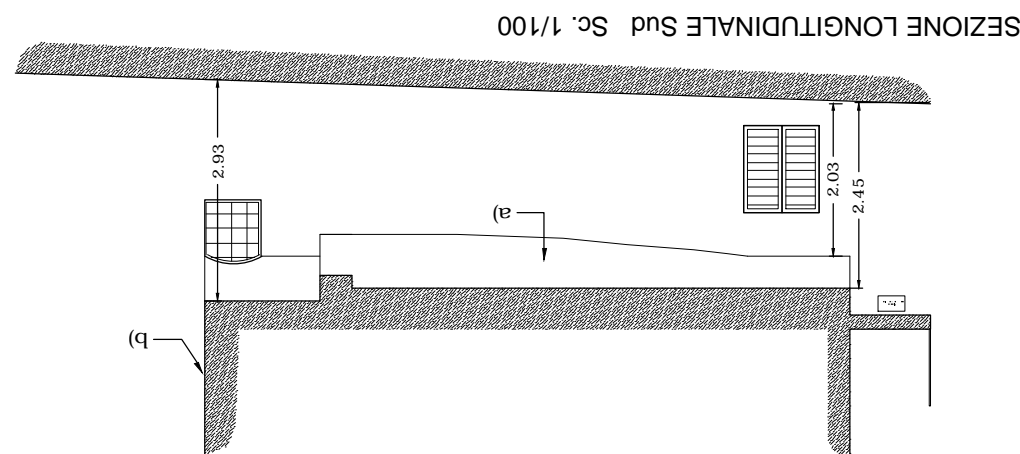
PROSPETTO Ovest Sc. 1/100



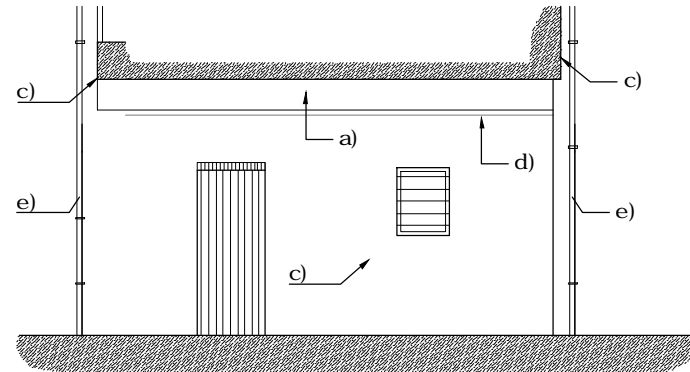
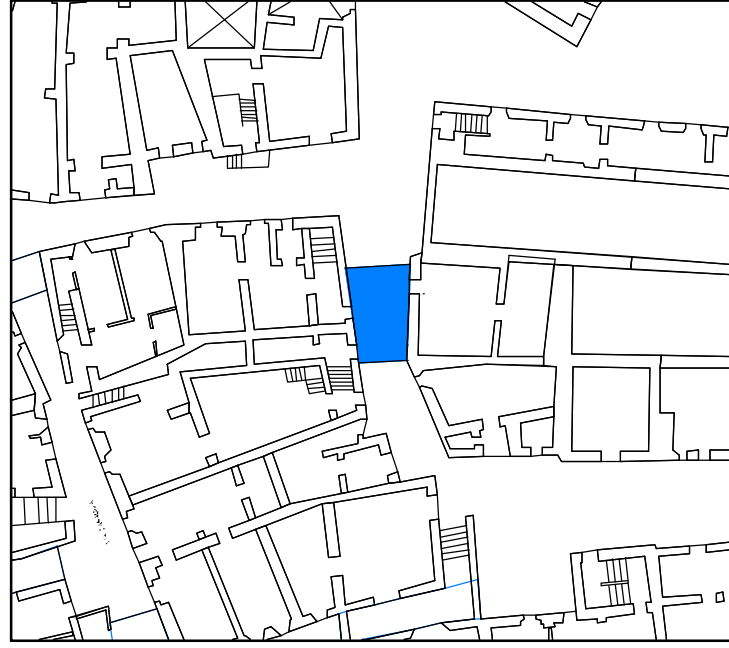
PIANTA Sc. 1/100



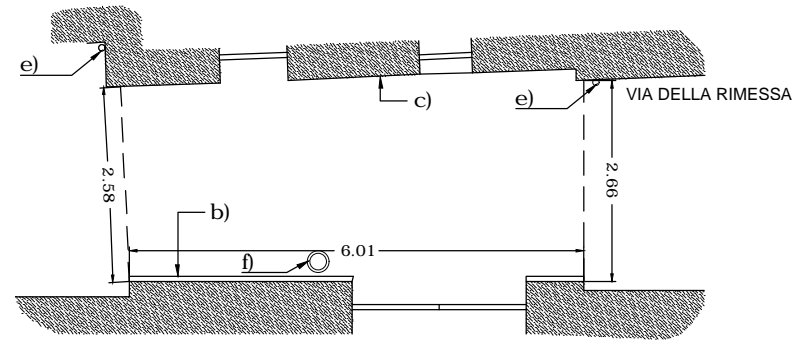
PROSPETTO Est Sc. 1/100



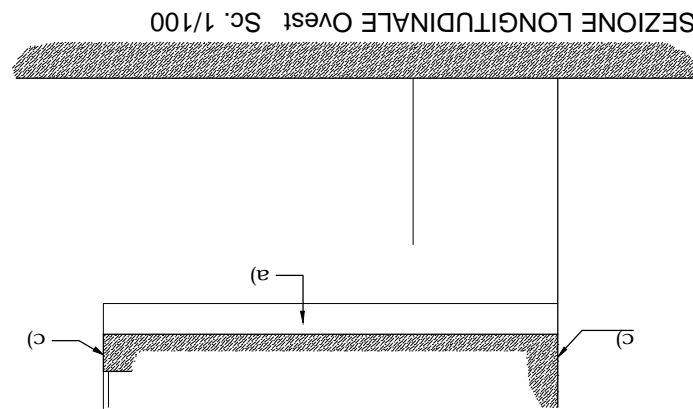
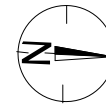
SEZIONE LONGITUDINALE Sud Sc. 1/100



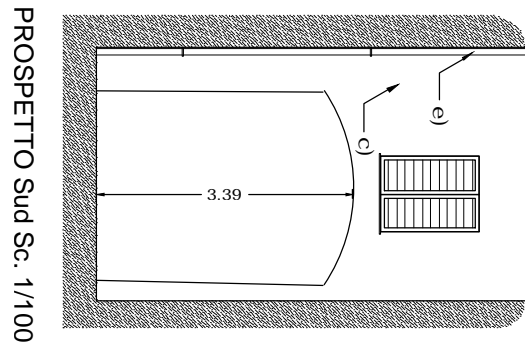
SEZIONE LONGITUDINALE Est Sc. 1/100



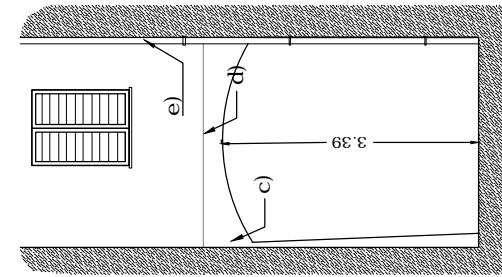
PIANTA Sc. 1/100



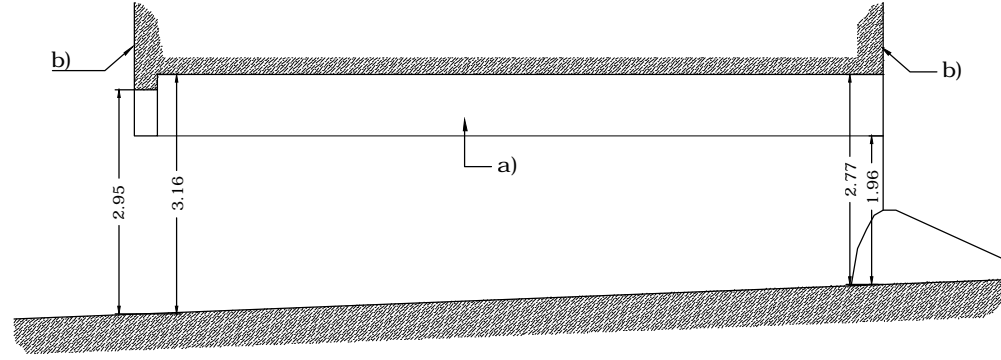
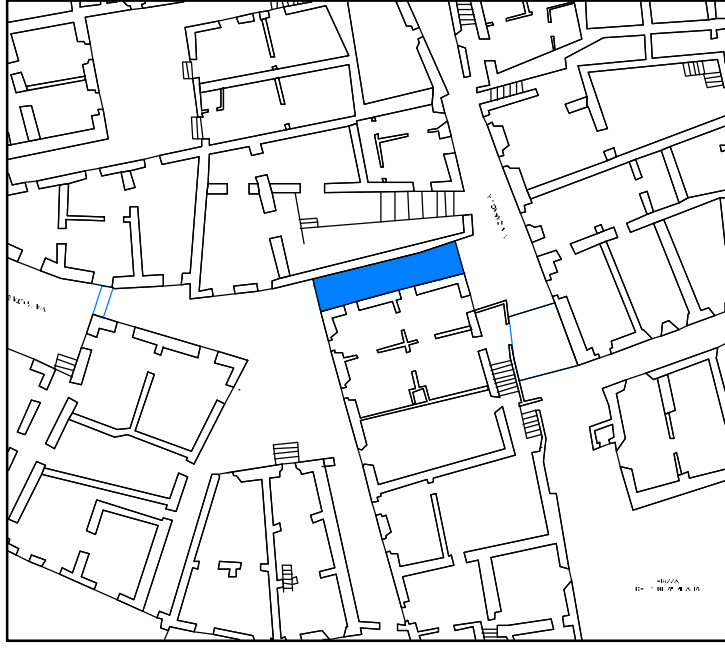
SEZIONE LONGITUDINALE Ovest Sc. 1/100



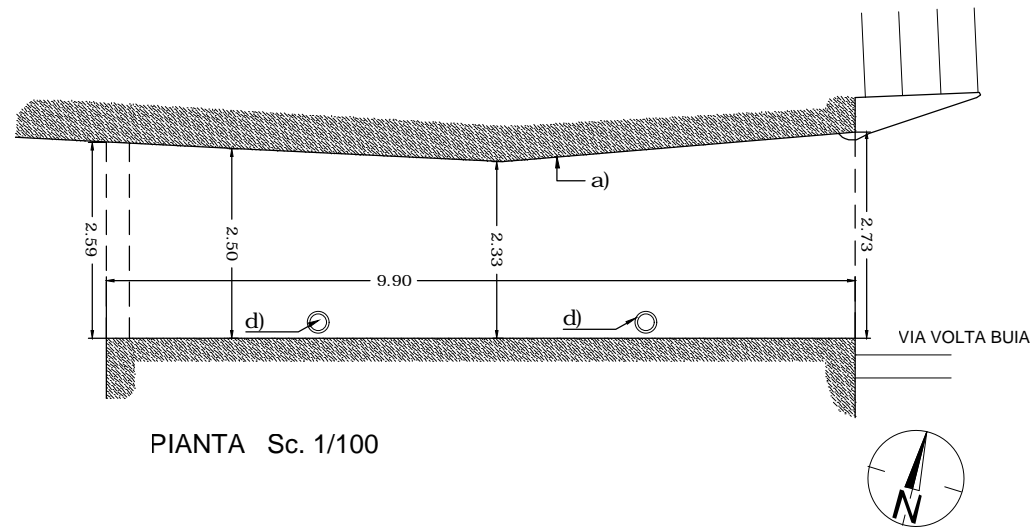
PROSPETTO Sud Sc. 1/100



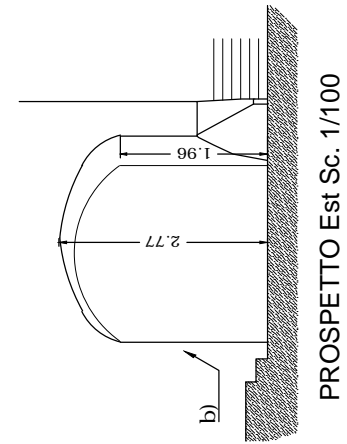
PROSPETTO Nord Sc. 1/100



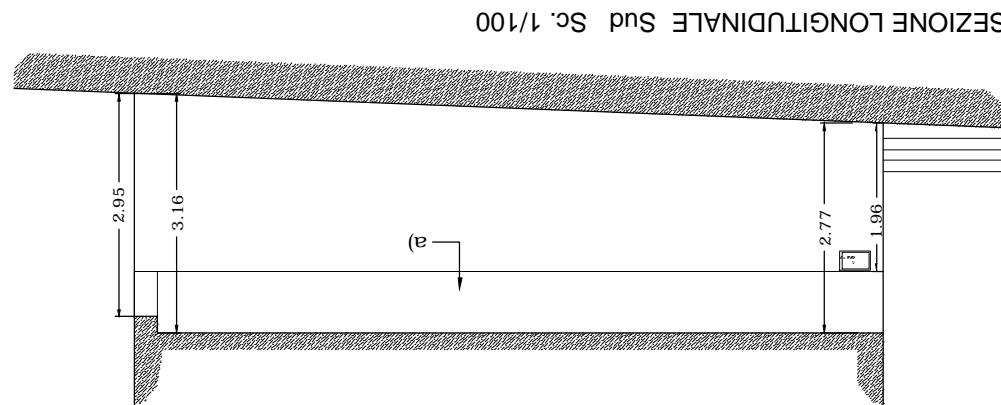
SEZIONE LONGITUDINALE Nord Sc. 1/100



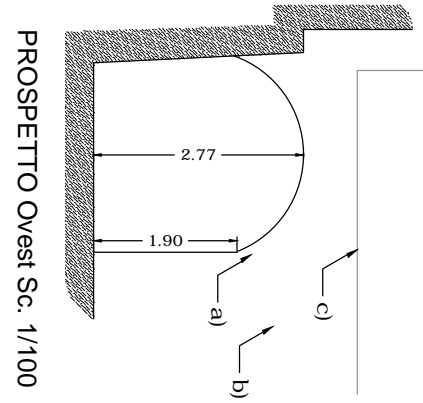
PIANTA Sc. 1/100



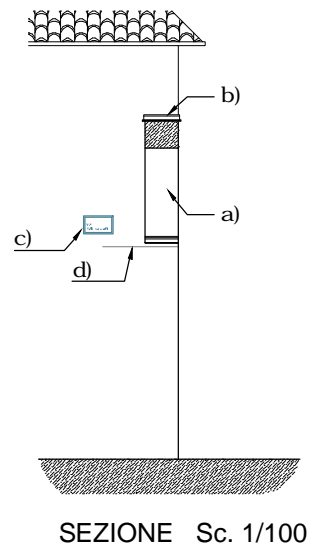
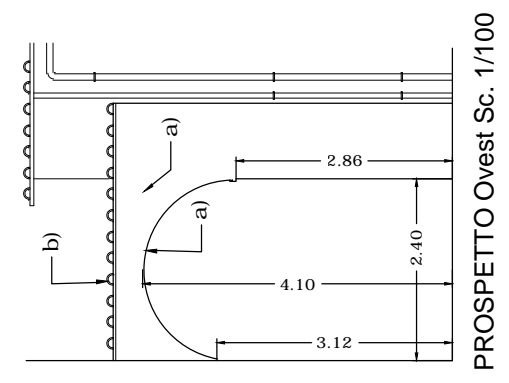
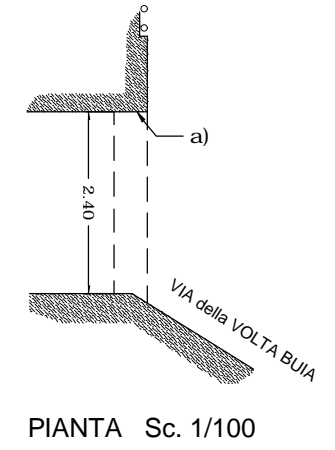
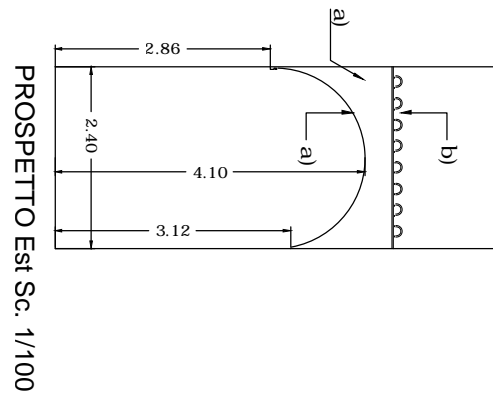
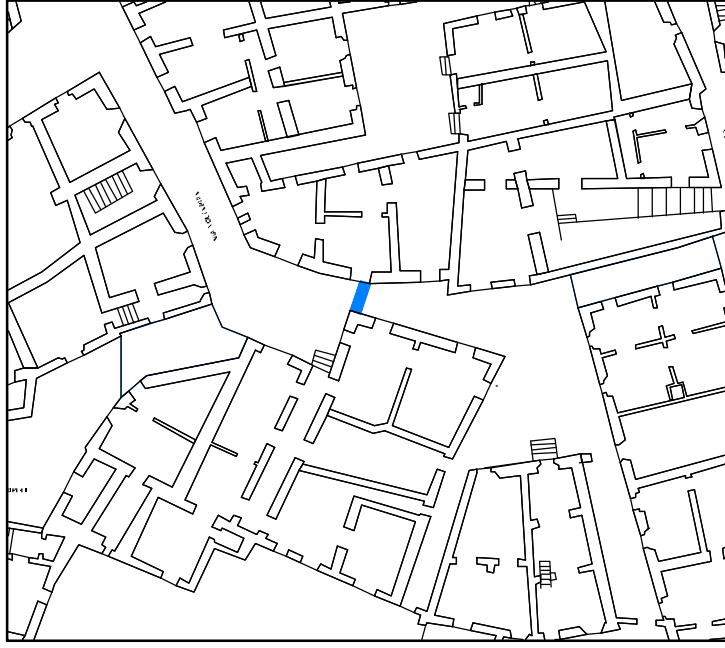
PROSPETTO Est Sc. 1/100

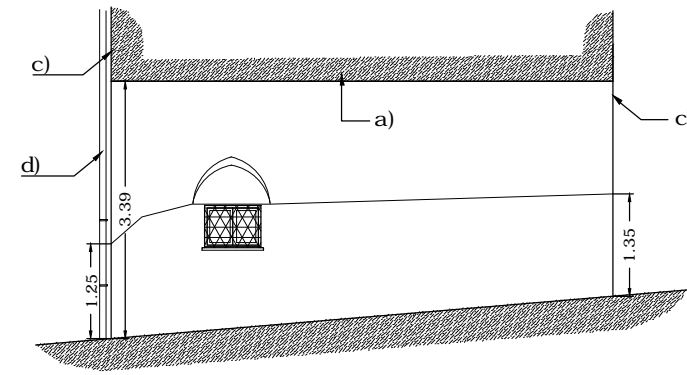
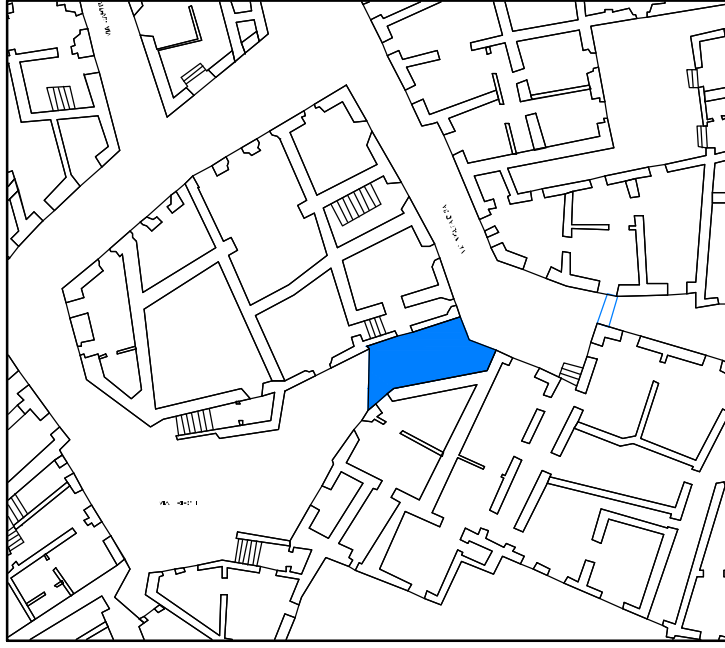


SEZIONE LONGITUDINALE Sud Sc. 1/100

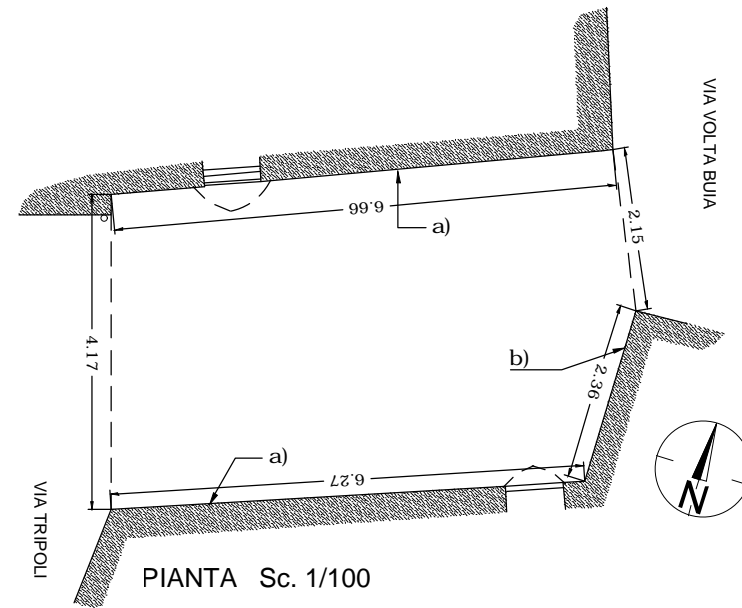


PROSPETTO Ovest Sc. 1/100

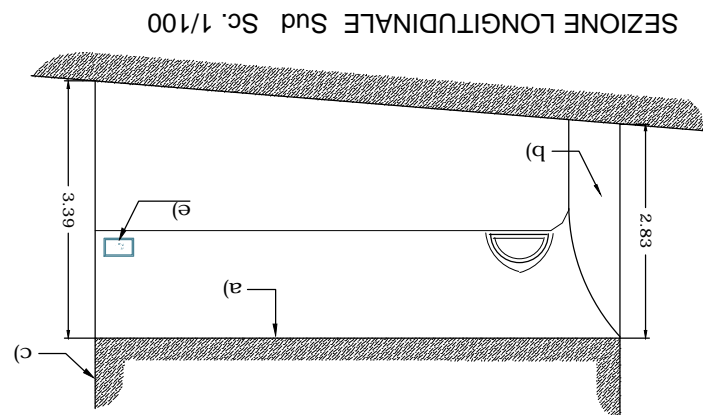




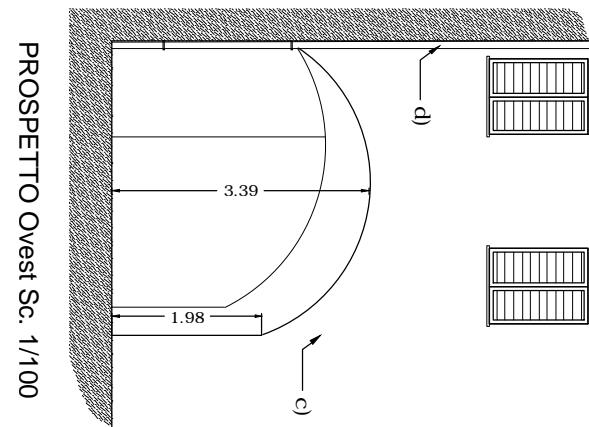
SEZIONE LONGITUDINALE Nord Sc. 1/100



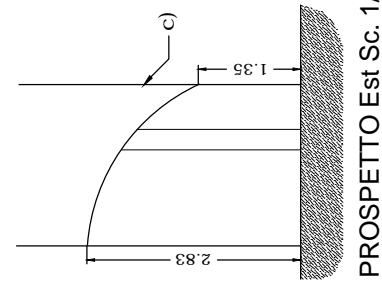
PIANTA Sc. 1/100



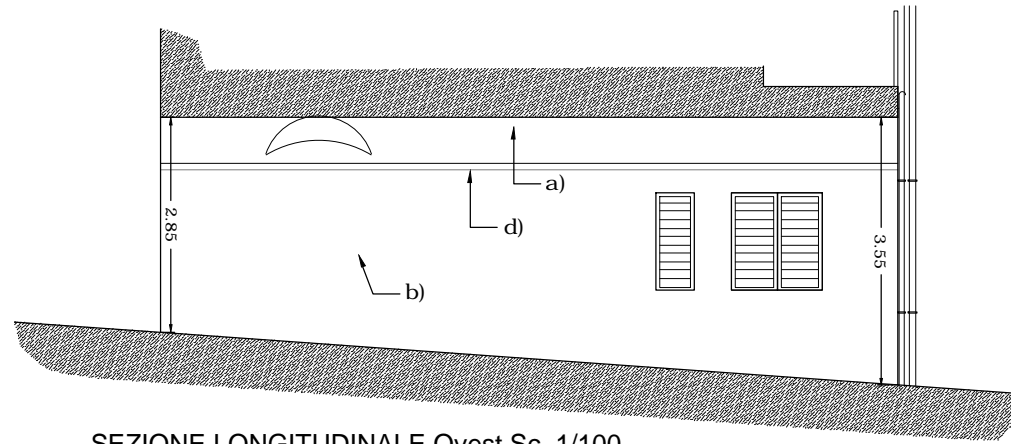
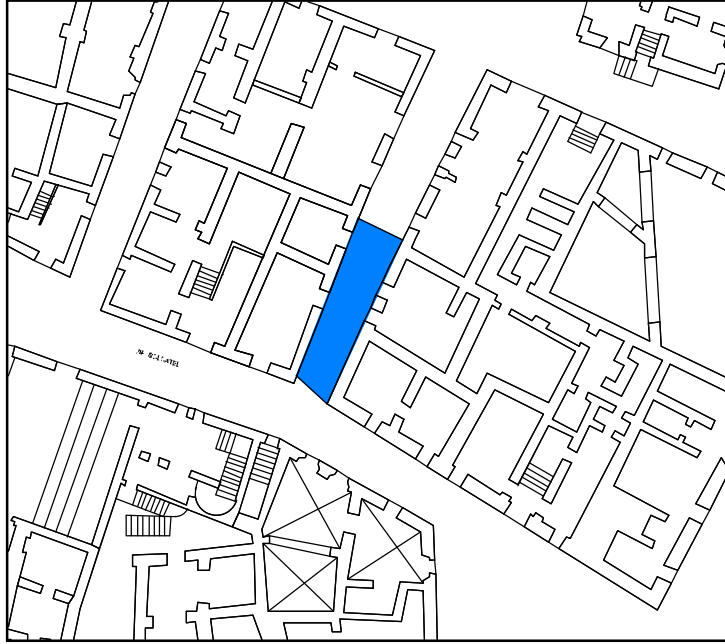
SEZIONE LONGITUDINALE Sud Sc. 1/100



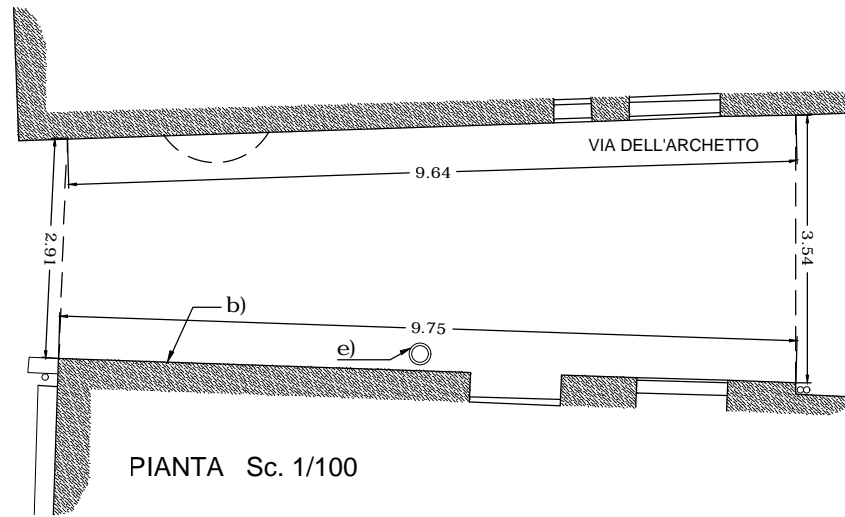
PROSPETTO West Sc. 1/100



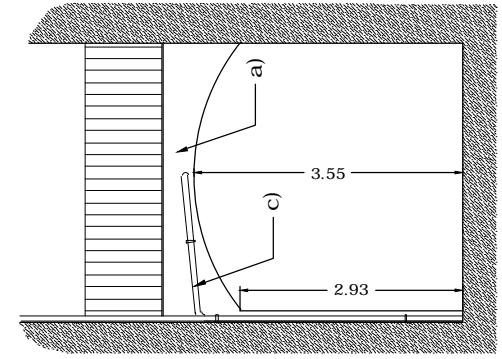
PROSPETTO Est Sc. 1/100



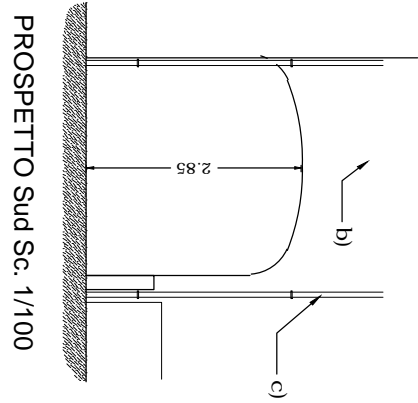
SEZIONE LONGITUDINALE Ovest Sc. 1/100



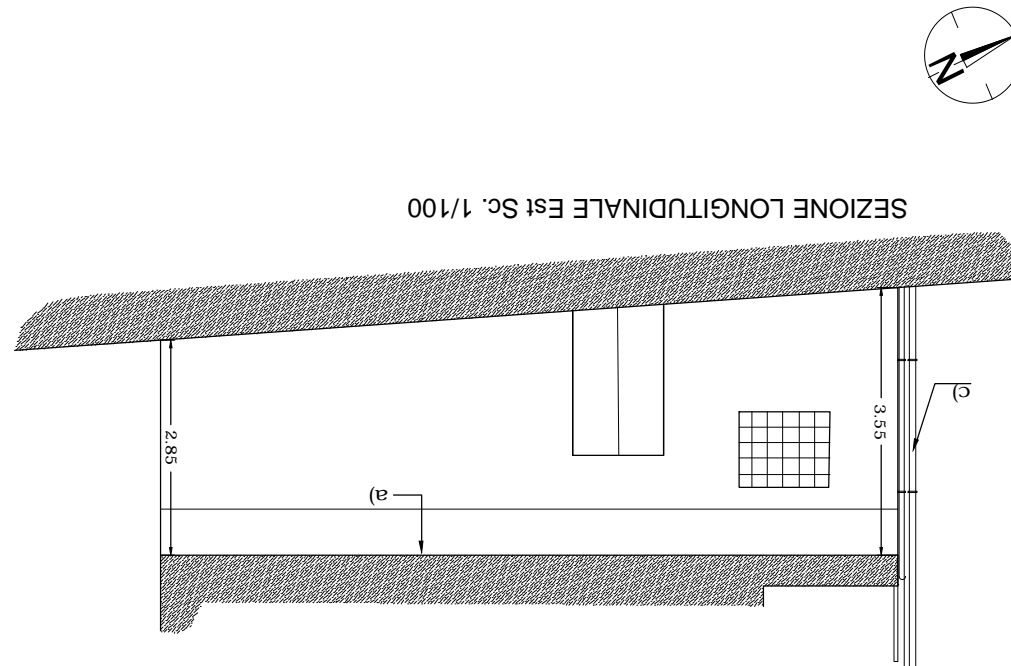
PIANTA Sc. 1/100



PROSPETTO Nord Sc. 1/100



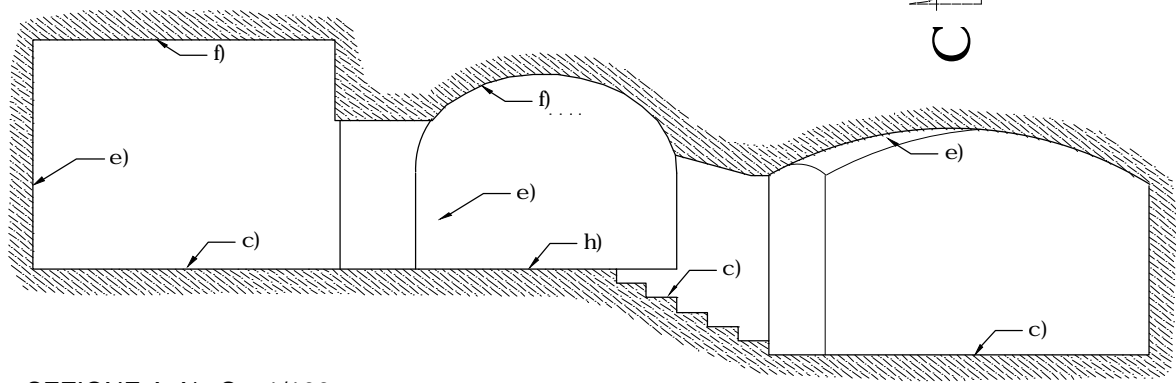
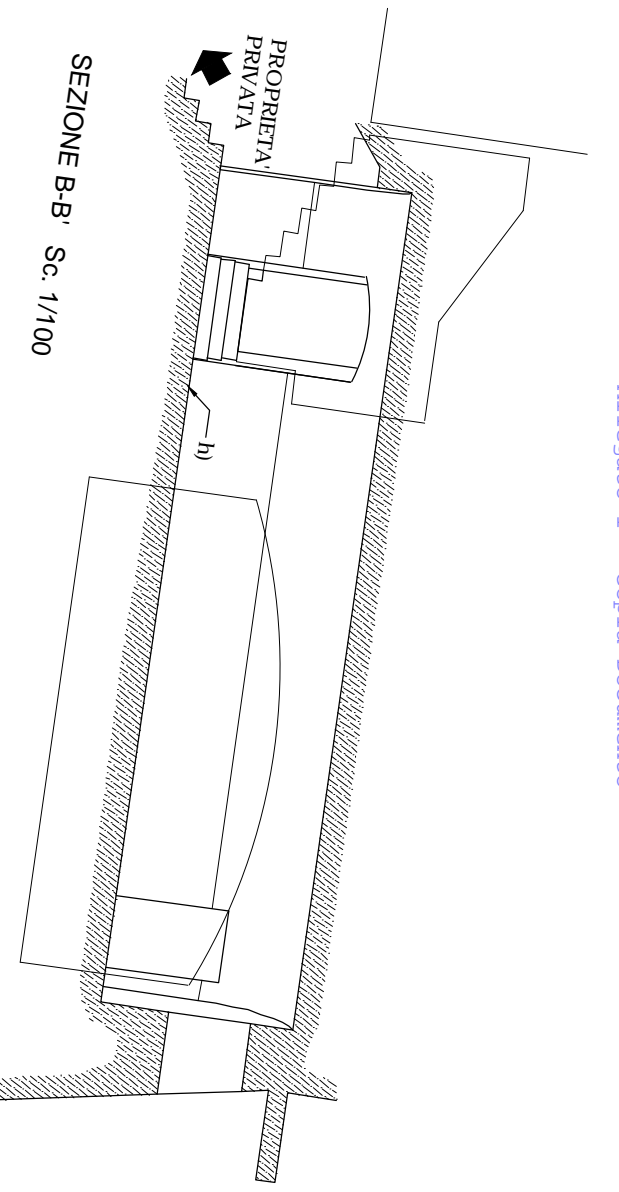
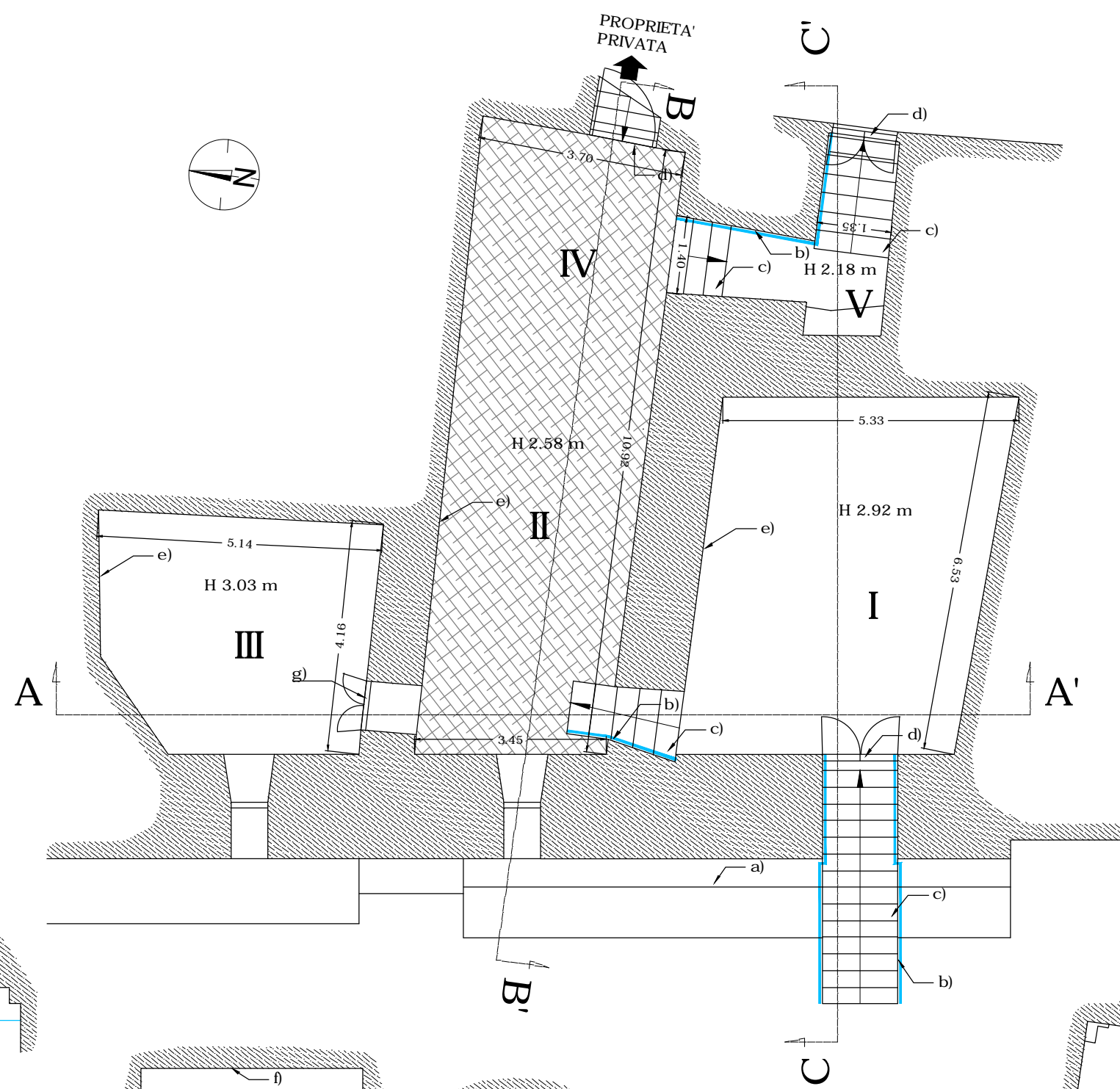
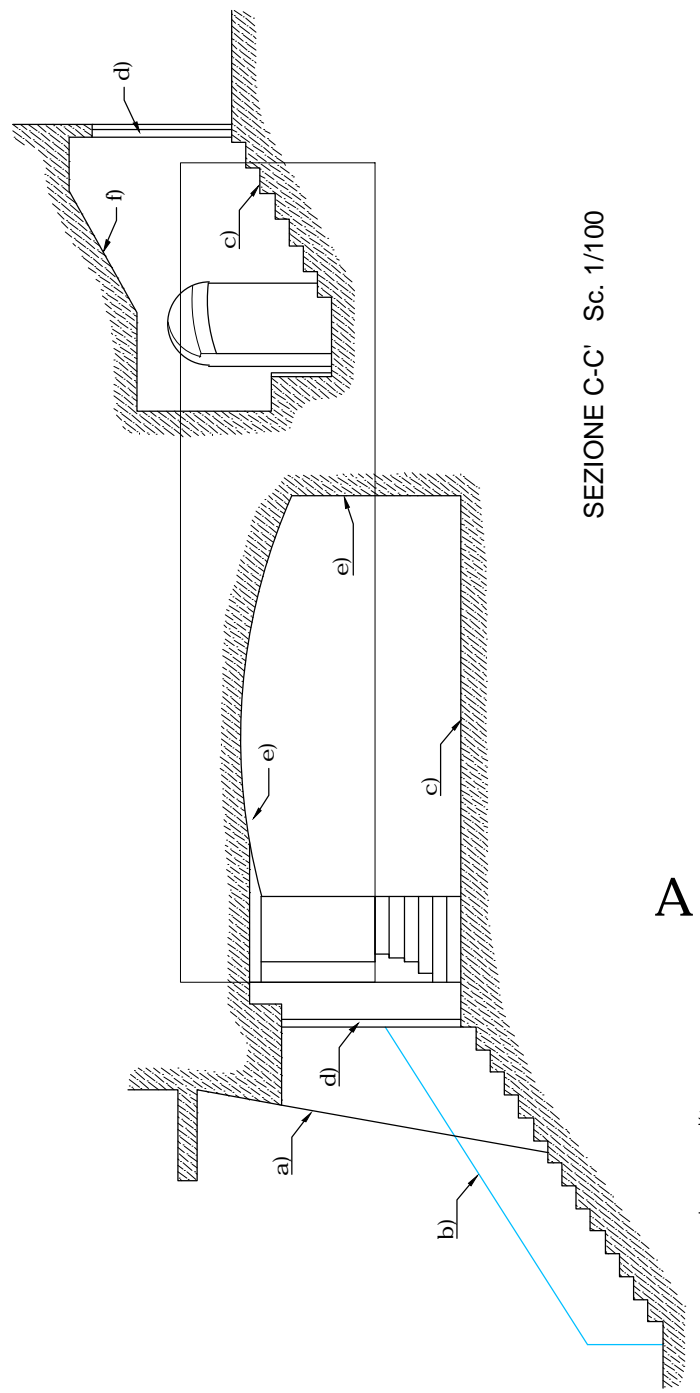
PROSPETTO Sud Sc. 1/100





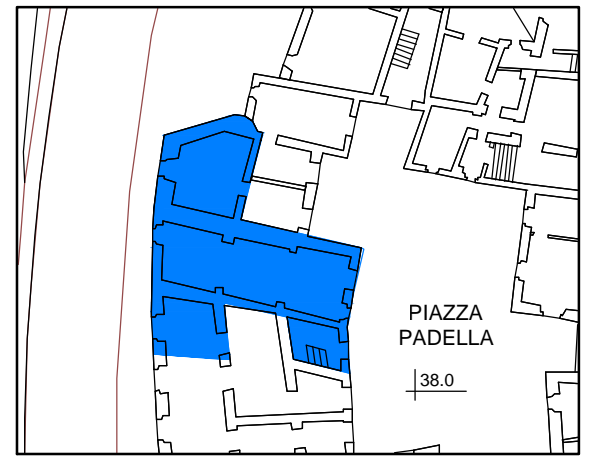
SEZIONE LONGITUDINALE Est Sc. 1/100



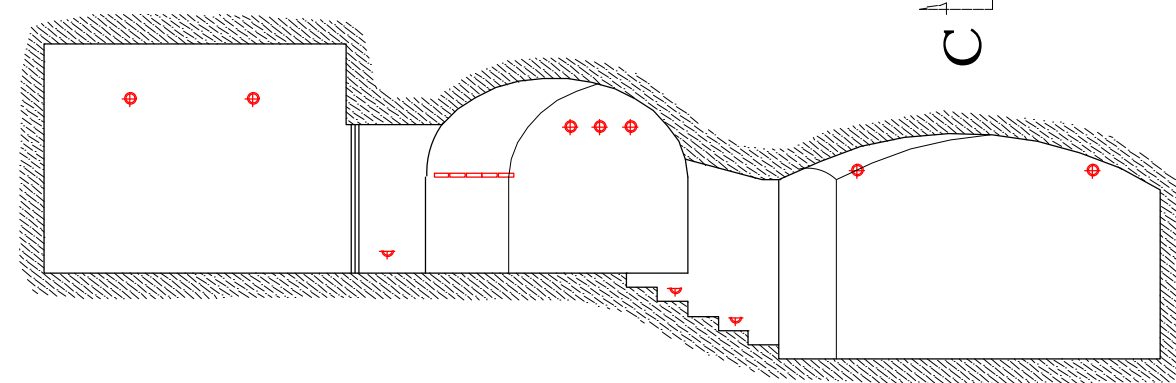
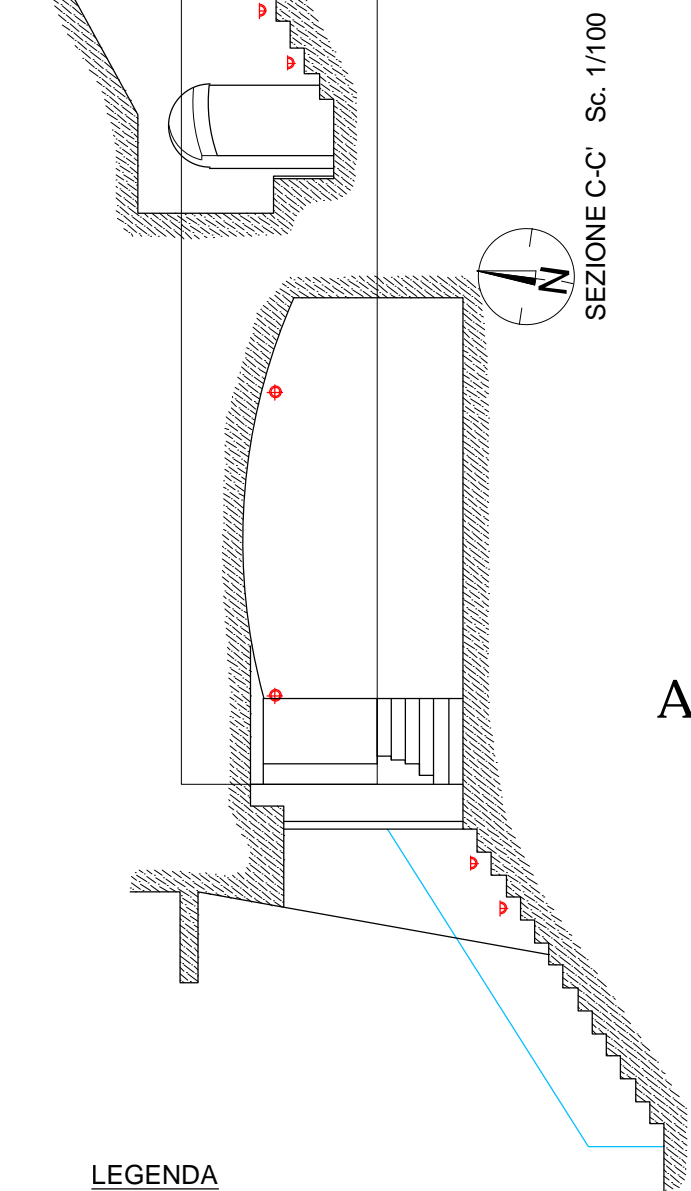
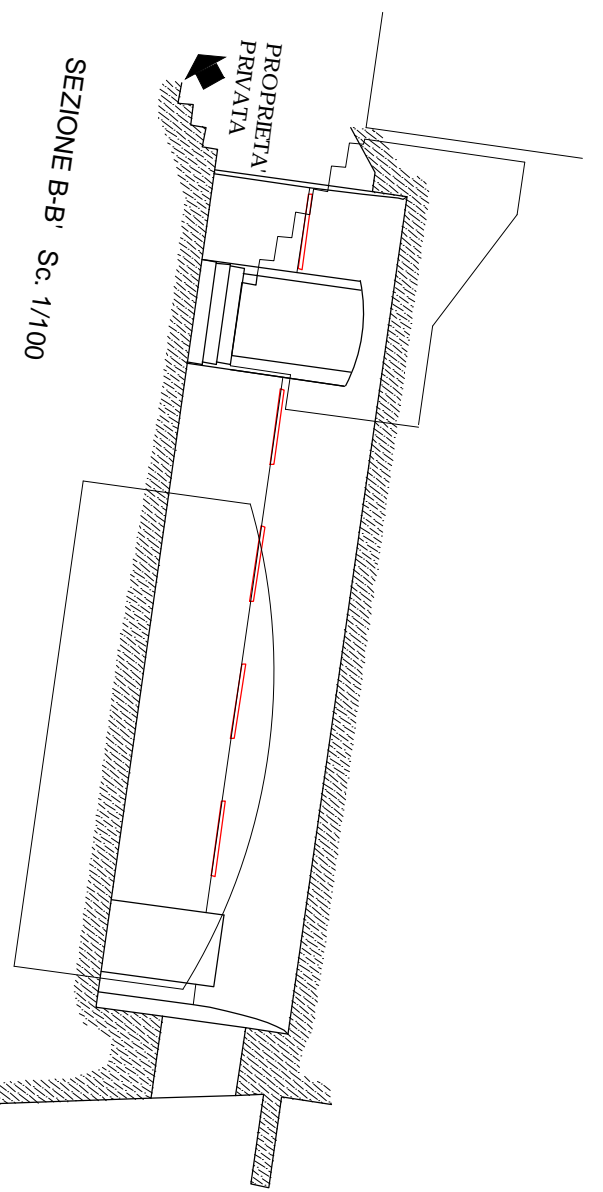
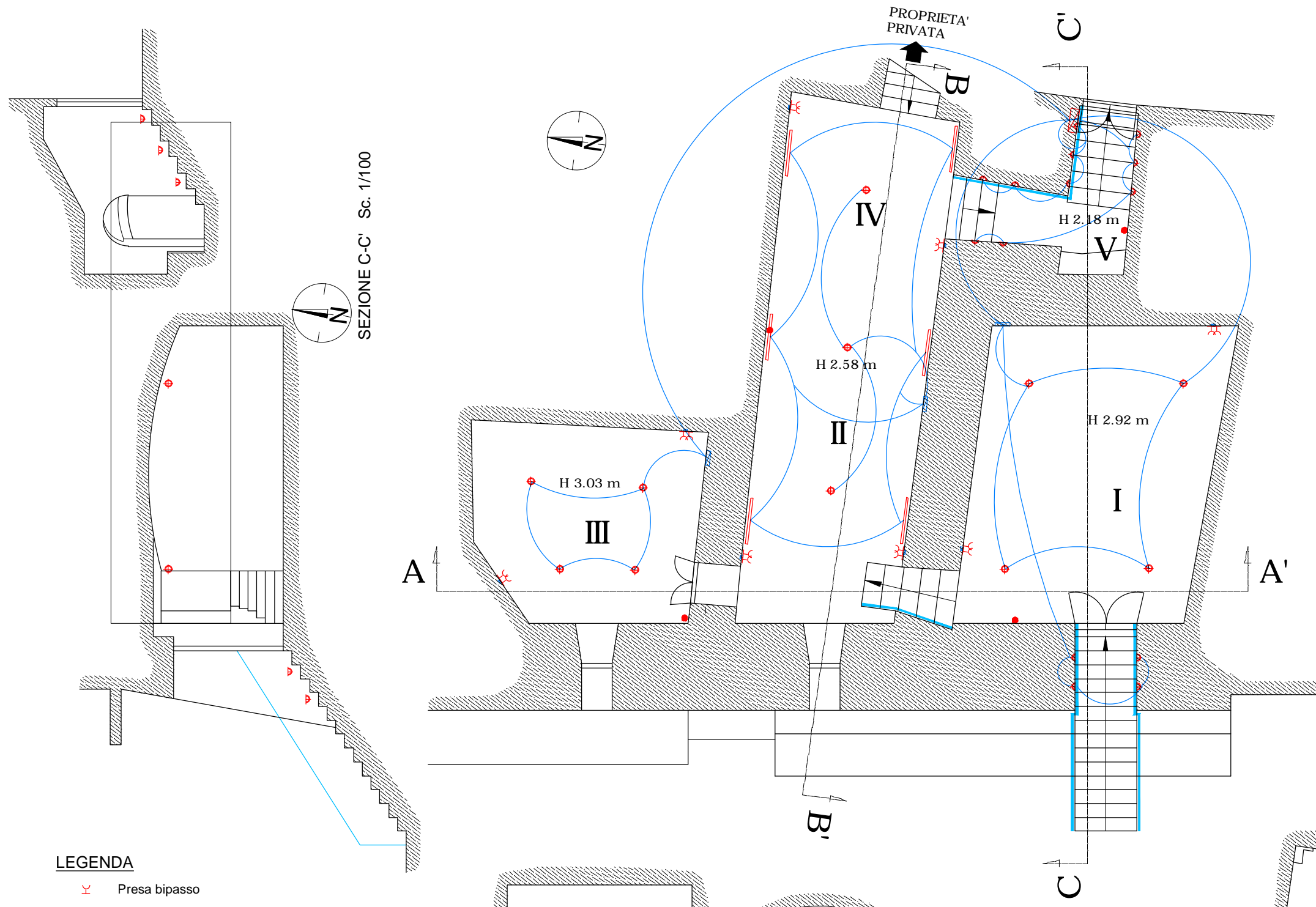
POST OPERAM  
Interventi sugli elementi architettonici










**LEGENDA**  
 CORRIMANO TUBOLARE IN ACCIAIO  
 PAVIMENTAZIONE DA SOSTITUIRE

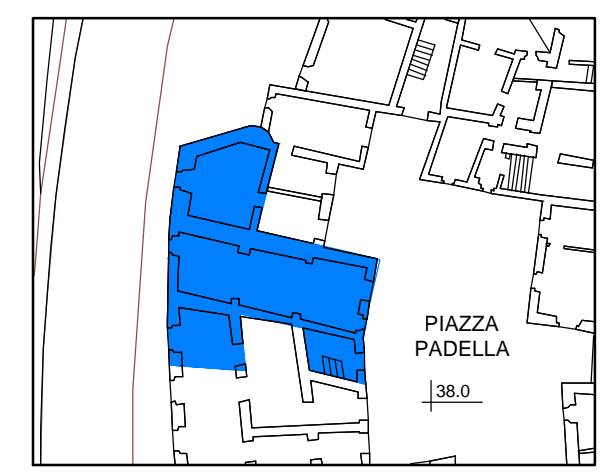


POST OPERAM  
Nuovo sistema di illuminazione a LED

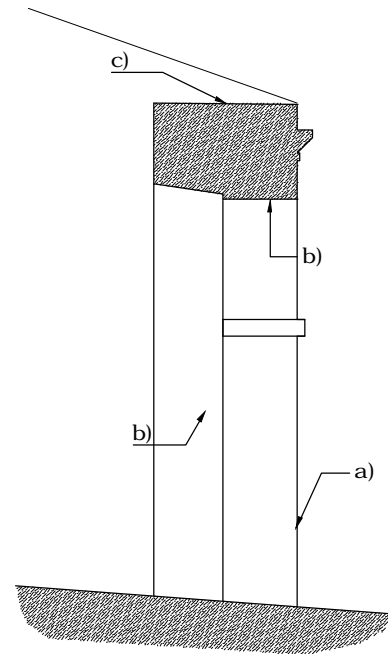
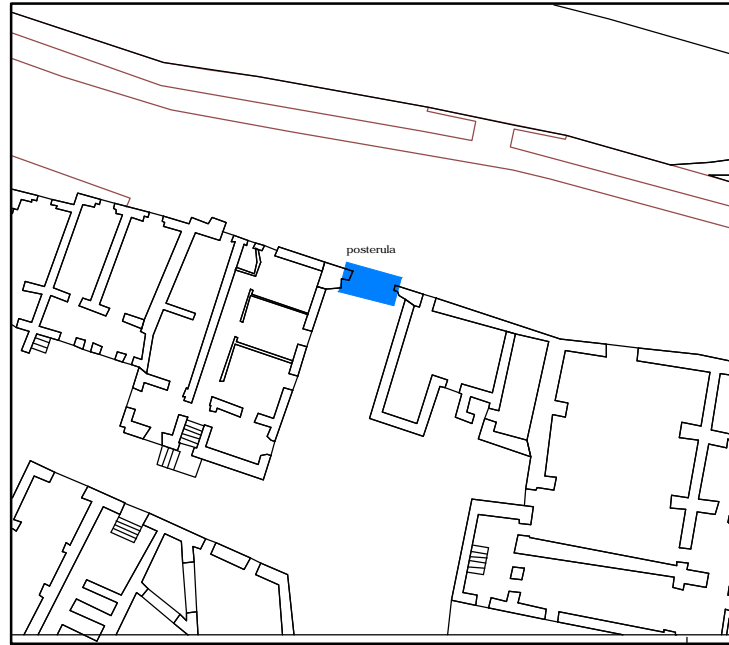


LEGENDA

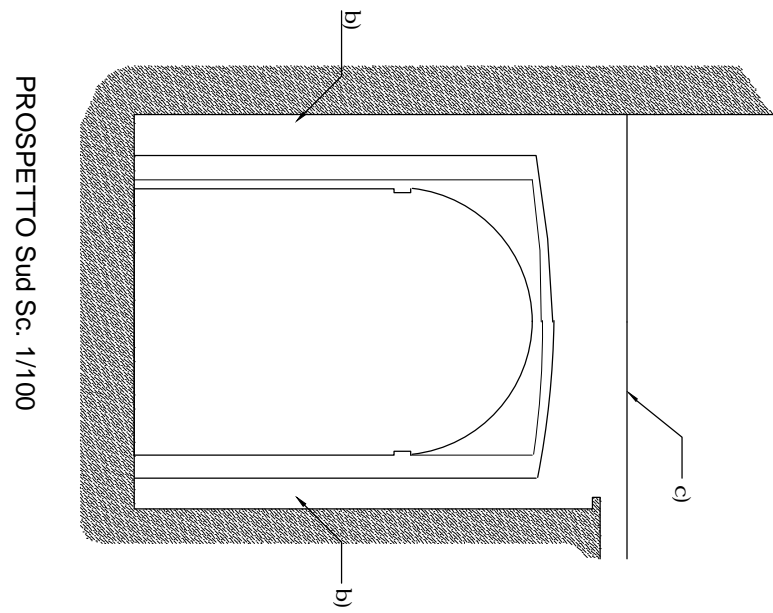
-  Presa bipasso
-  Luce emergenza
-  Wall-washer lineare
-  Segnapasso
-  Apparecchio a sospensione
-  Scatola di derivazione
-  Quadro elettrico



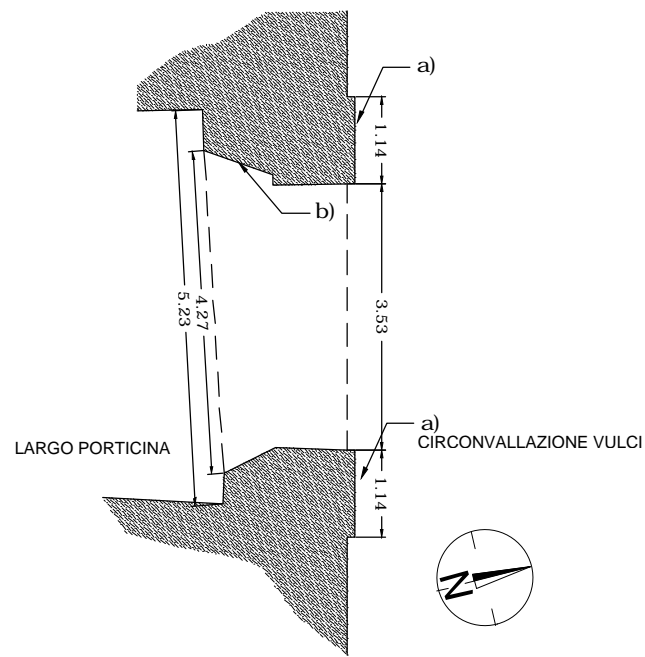




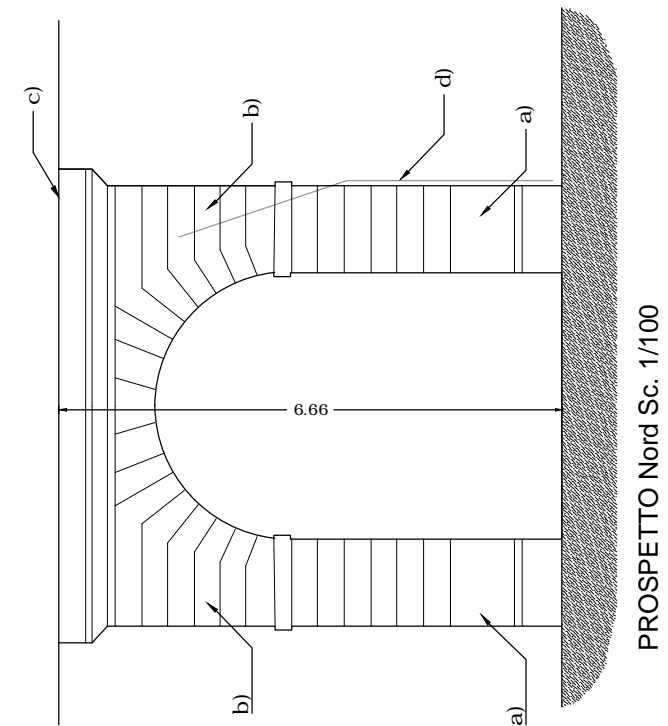
SEZIONE Ovest Sc. 1/100



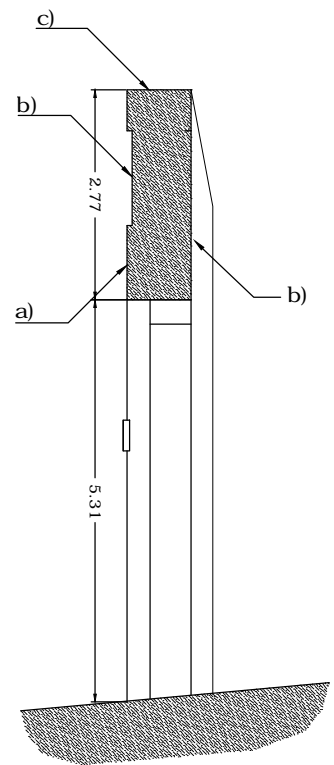
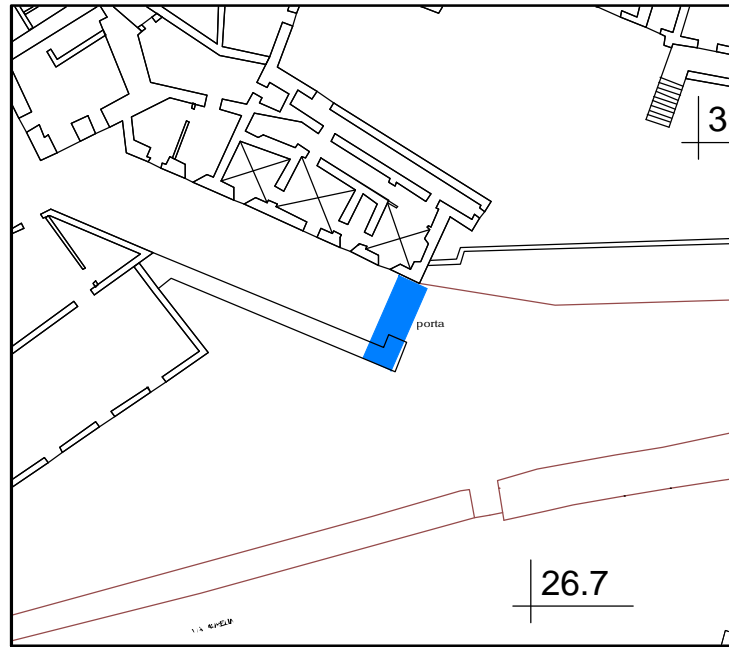
PROSPETTO Sud Sc. 1/100



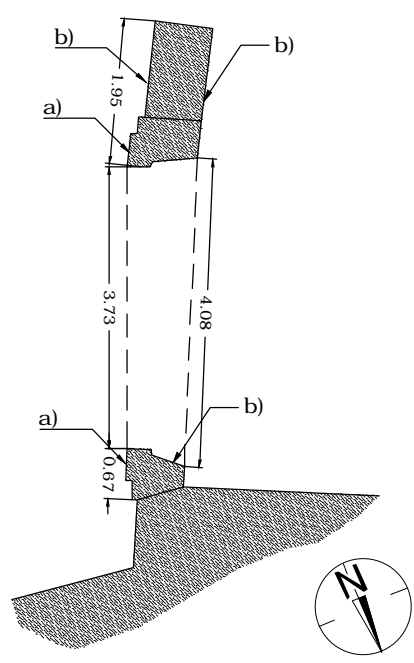
PIANTA Sc. 1/100



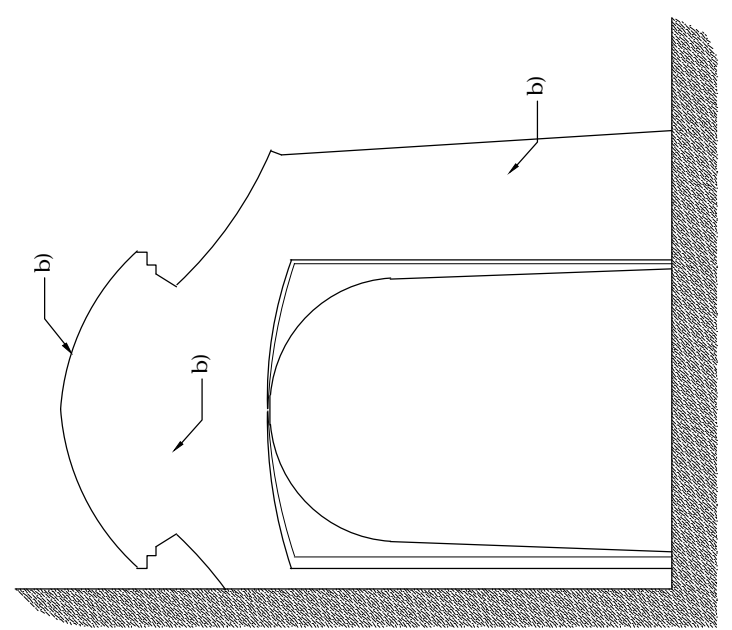
PROSPETTO Nord Sc. 1/100



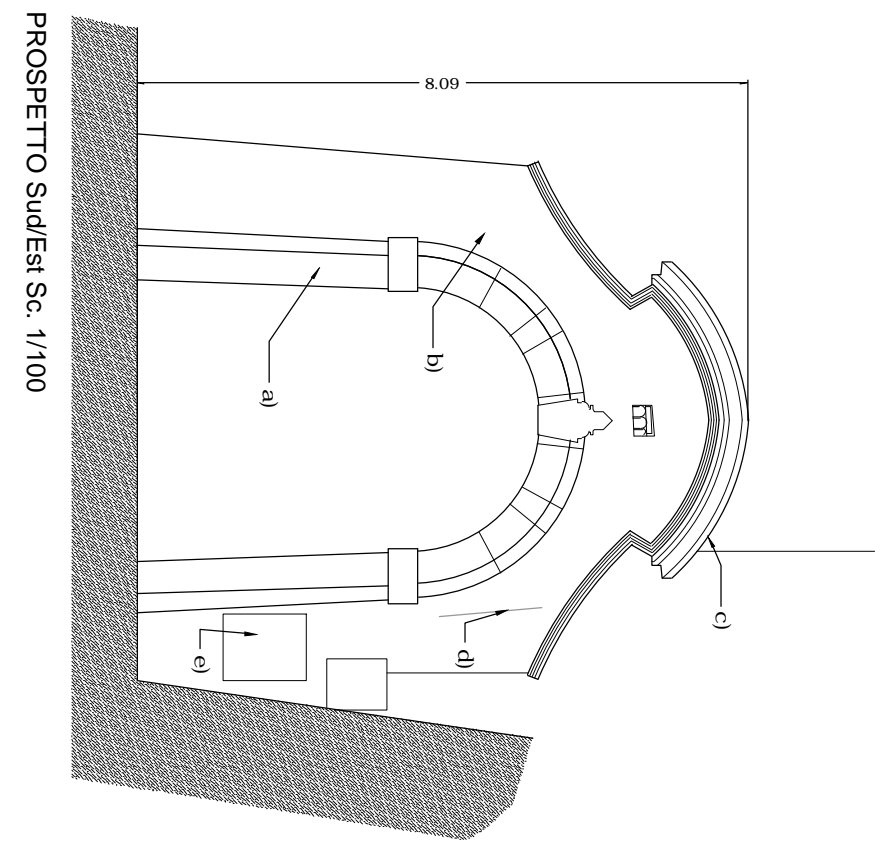
SEZIONE Sc. 1/100



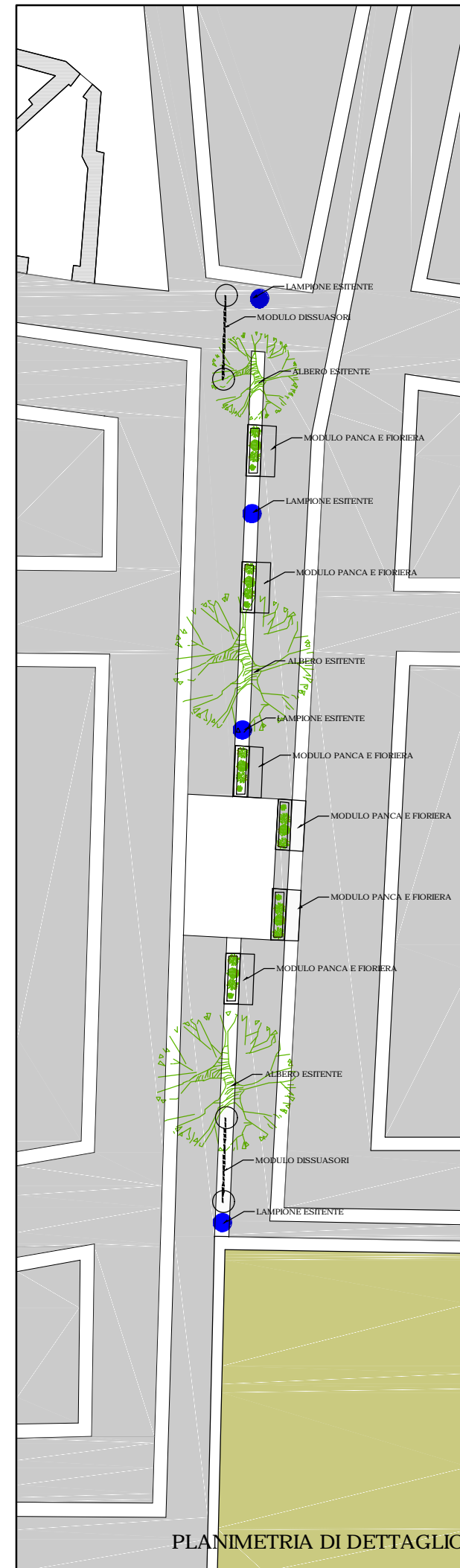
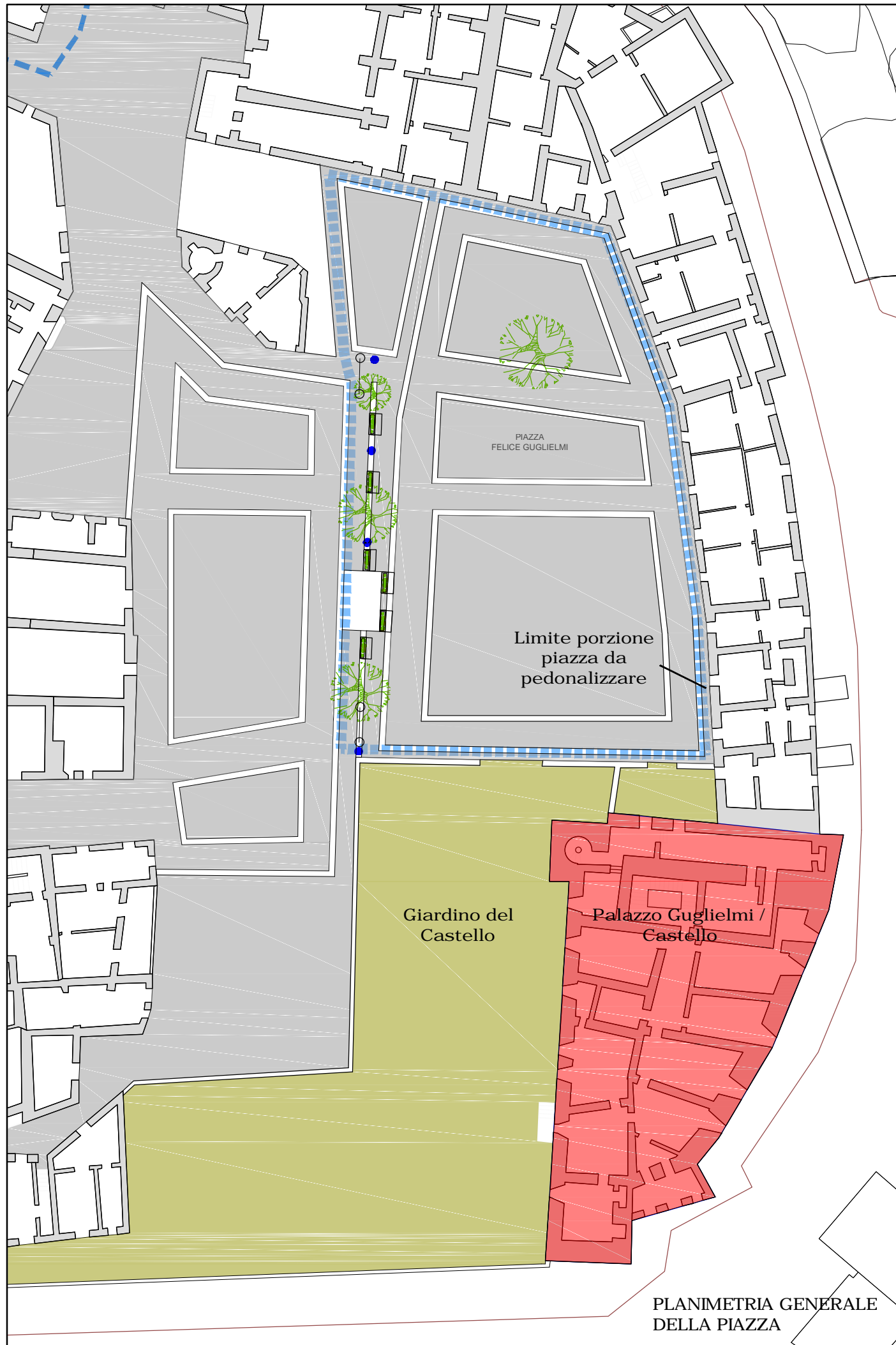
PIANTA Sc. 1/100



PROSPETTO Nord/Ovest Sc. 1/100



PROSPETTO Sud/Est Sc. 1/100



DETTAGLIO MODULO PANCA E FIORIERA

